

# Zoning Map 52



## Zoning Districts

### Residential District

- R-40,000
- R-20,000
- R-10,000
- R-7,500

### Commercial District

- C-1
- C-2
- C-3
- I-1
- I-2

### Resource District

- Heritage
- Agriculture
- Conservation

### Overlays

#### Mineral Resource Overlay

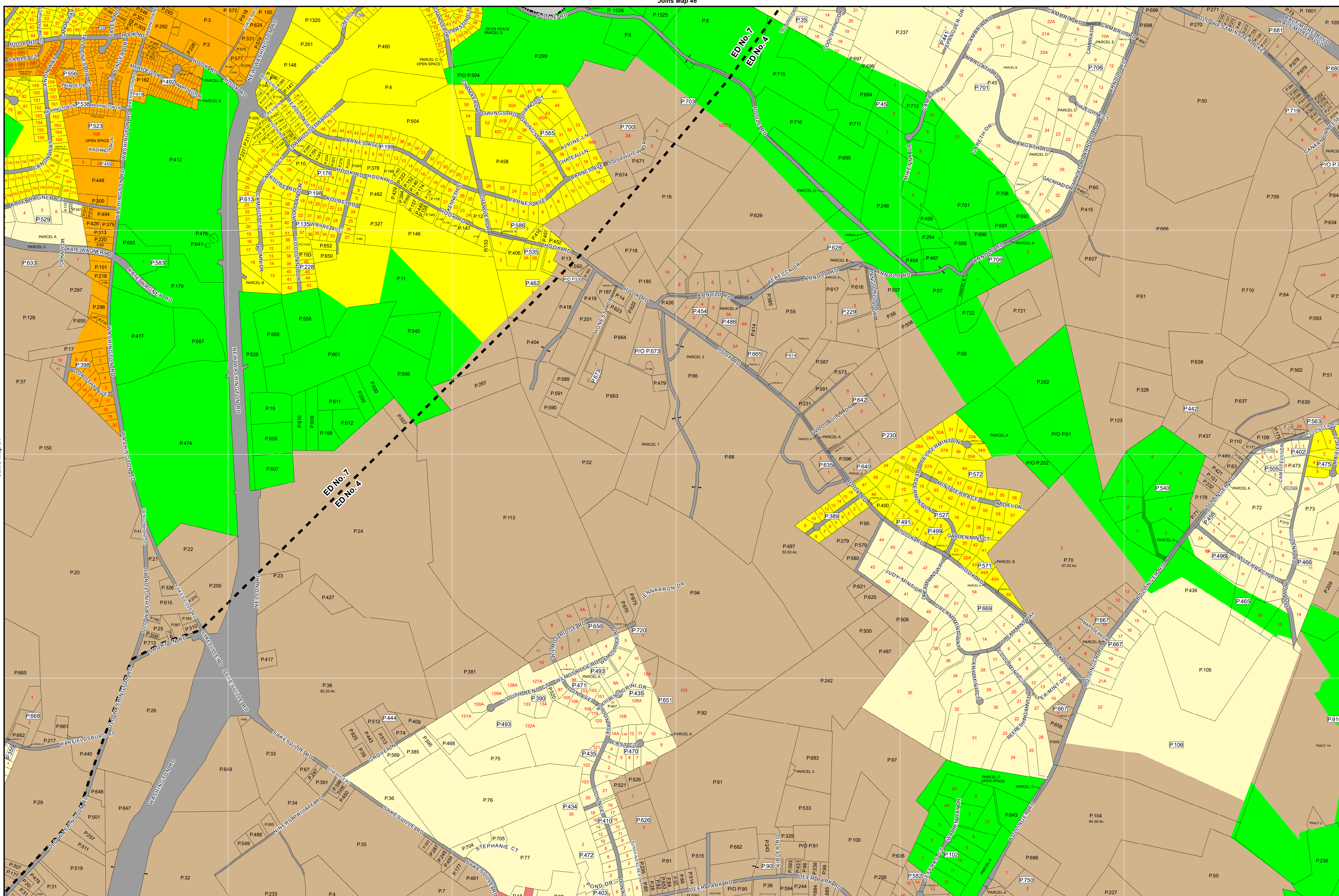
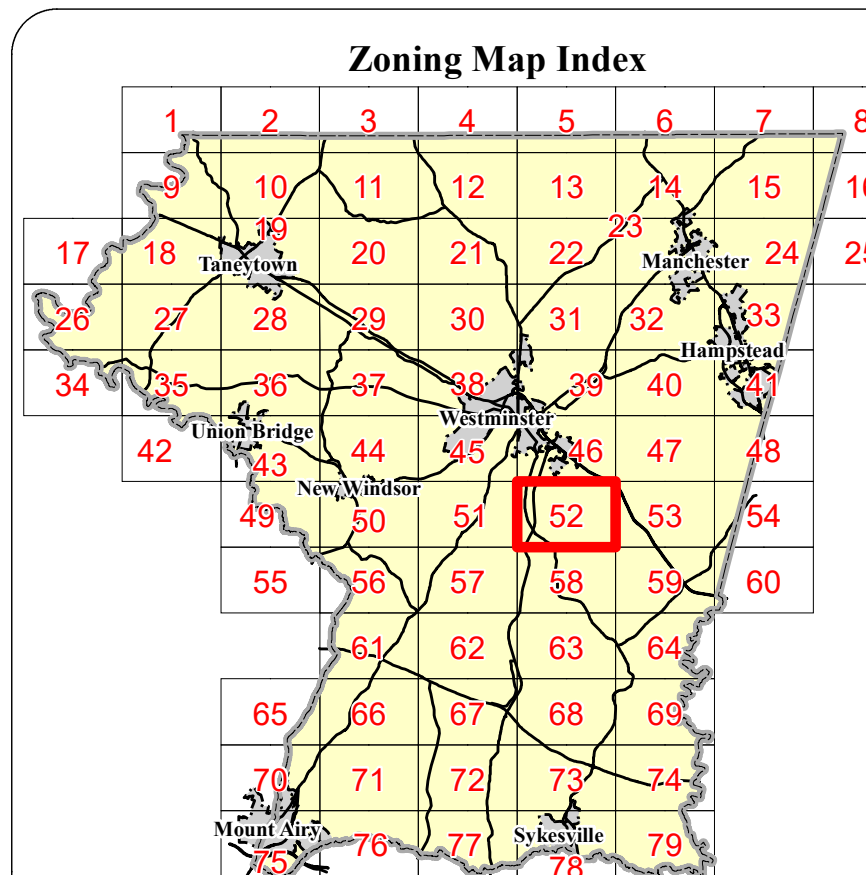
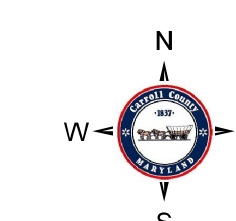
- MR (Recovery Area)
- VRA (Viable Resource Area)
- MRN (Notification Area)

#### Historic District Overlay

- Historic District Overlay

#### General

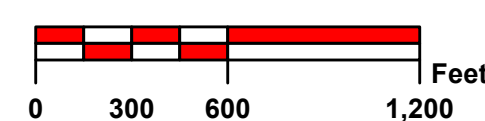
- County Border
- Corporate Limits
- Election District Boundary
- Parcel Boundary
- Railroad



Rev. #	MA #	Date	Description	Rev. #	MA #	Date	Description
9.				18.			
8.				17.			
7.				16.			
6.	Ord. 19-08	12/12/2019	Comprehensive Rezoning	15.			
5.	MA		Annexation #48	14.			
4.	MA 166	11/25/1986	Rezoning Case #132	13.			
3.	MA 163	9/30/1986	Westminster Comprehensive Plan	12.			
2.	MA120	9/1/1983	Rezoning Case #126	11.			
1.	MA 60	9/11/1973	Rezoning Case #52	10.			

The information contained on this map is not to be construed or used as a "legal description" and is not a survey product. While Carroll County strives to provide the best data possible, it does not provide any guaranty of accuracy or completeness regarding the map information. Where uncertainty exists in regards to the zoning districts, a determination by the Zoning Administrator may be required.

Any errors or omissions should be reported to the Carroll County Department of Land and Resource Management GIS section. Mapping contact: LRM@carrollcountymd.gov or 410-386-2949. Zoning contact: zoningadministration@carrollcountymd.gov or 410-386-2980



By Resolution of the County Commissioners of Carroll County, Maryland, a body corporate and politic of the State of Maryland

*Stephen A. Wantz*  
Stephen A. Wantz President

*C. Eric Bouchat*  
C. Eric Bouchat Commissioner

Map signed this 12<sup>th</sup> Day of December, 2019

*Edward C. Rothstein*  
Edward C. Rothstein Vice-President

*Dennis E. Frazier*  
Dennis E. Frazier Commissioner

Attest: *Shawn D. Reese*  
Shawn D. Reese County Clerk

C. Richard Weaver 2nd Vice President

COUNTY COMMISSIONERS OF CARROLL COUNTY, MARYLAND

# Zoning Map 52