

Zoning Map 63



Zoning Districts

Residential District

- R-40,000
- R-20,000
- R-10,000
- R-7,500

Commercial District

- C-1
- C-2
- C-3
- I-1
- I-2

Resource District

- Heritage
- Agriculture
- Conservation

Overlays

Mineral Resource Overlay

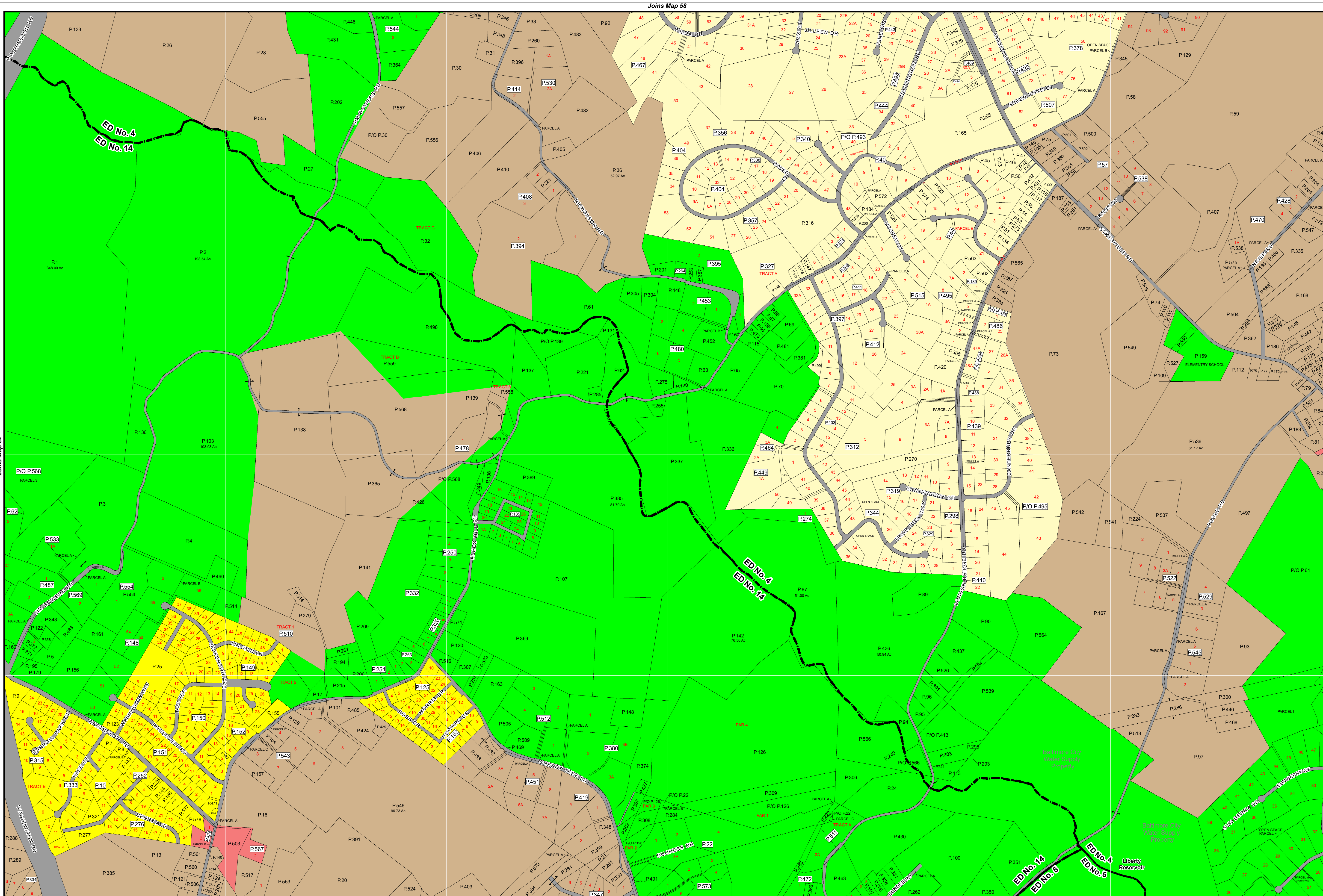
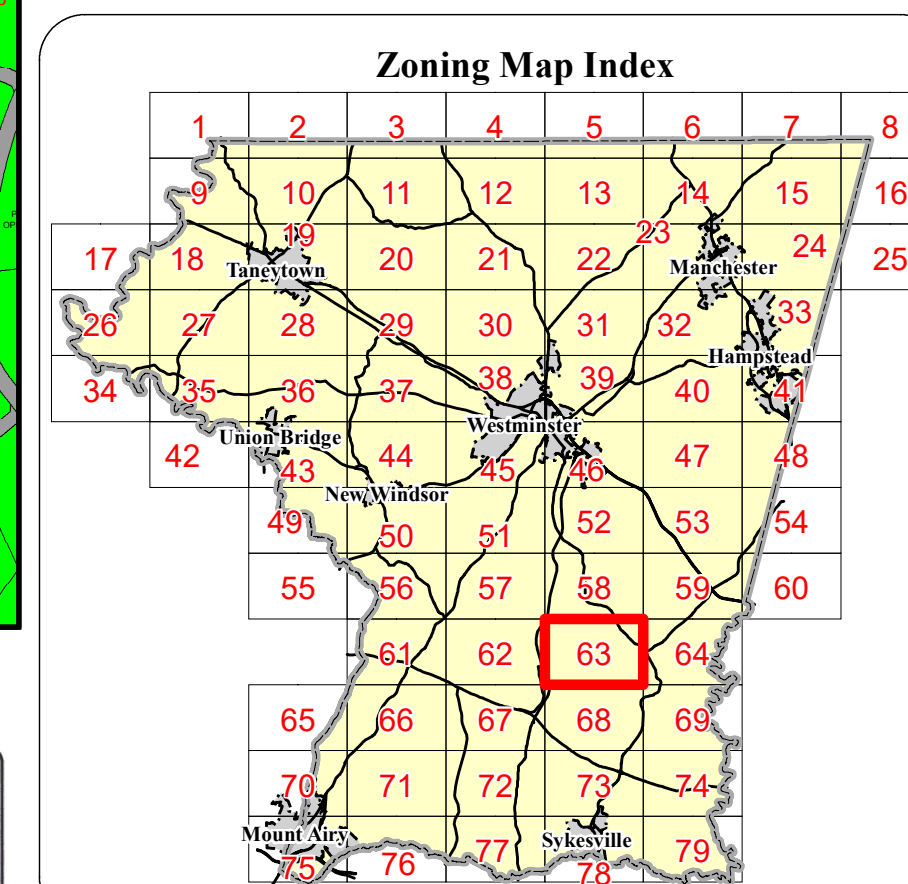
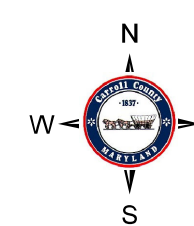
- MR (Recovery Area)
- VRA (Viable Resource Area)
- MRN (Notification Area)

Historic District Overlay

- Historic District Overlay

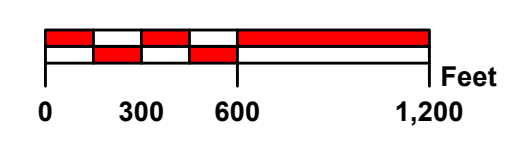
General

- County Border
- Corporate Limits
- Election District Boundary
- Railroad



Rev. #	MA #	Date	Description	Rev. #	MA #	Date	Description
9.				18.			
8.				17.			
7.				16.			
6.				15.			
5.				14.			
4.	Ord. 19-08	12/12/2019	Comprehensive Rezoning	13.			
3.	MA 191	8/18/1990	Administrative Map Correction (Parcels 215 & 216)	12.			
2.	MA 191	8/18/1990	Rezoning Case #169	11.			
1.	MA 102	1/6/1981	Comprehensive Rezoning Finksburg Area	10.			

The information contained on this map is not to be construed or used as a "legal description" and is not a survey product. While Carroll County strives to provide the best data possible, it does not provide any guaranty of accuracy or completeness regarding the map information. Where uncertainty exists in regards to the zoning districts, a determination by the Zoning Administrator may be required. Any errors or omissions should be reported to the Carroll County Department of Land and Resource Management GIS section. Mapping contact: LRM@carrollcountymd.gov or 410-386-2949. Zoning contact: zoningadministration@carrollcountymd.gov or 410-386-2980



By Resolution of the County Commissioners of Carroll County, Maryland, a body corporate and politic of the State of Maryland

Map signed this 12th Day of December, 2019

Attest: Shawn D. Reese County Clerk

Stephen A. Wantz President
Edward C. Rothstein Vice-President
C. Richard Weaver 2nd Vice President

C. Eric Bouchat Commissioner
Dennis E. Frazier Commissioner

COUNTY COMMISSIONERS OF CARROLL COUNTY, MARYLAND

Zoning Map 63