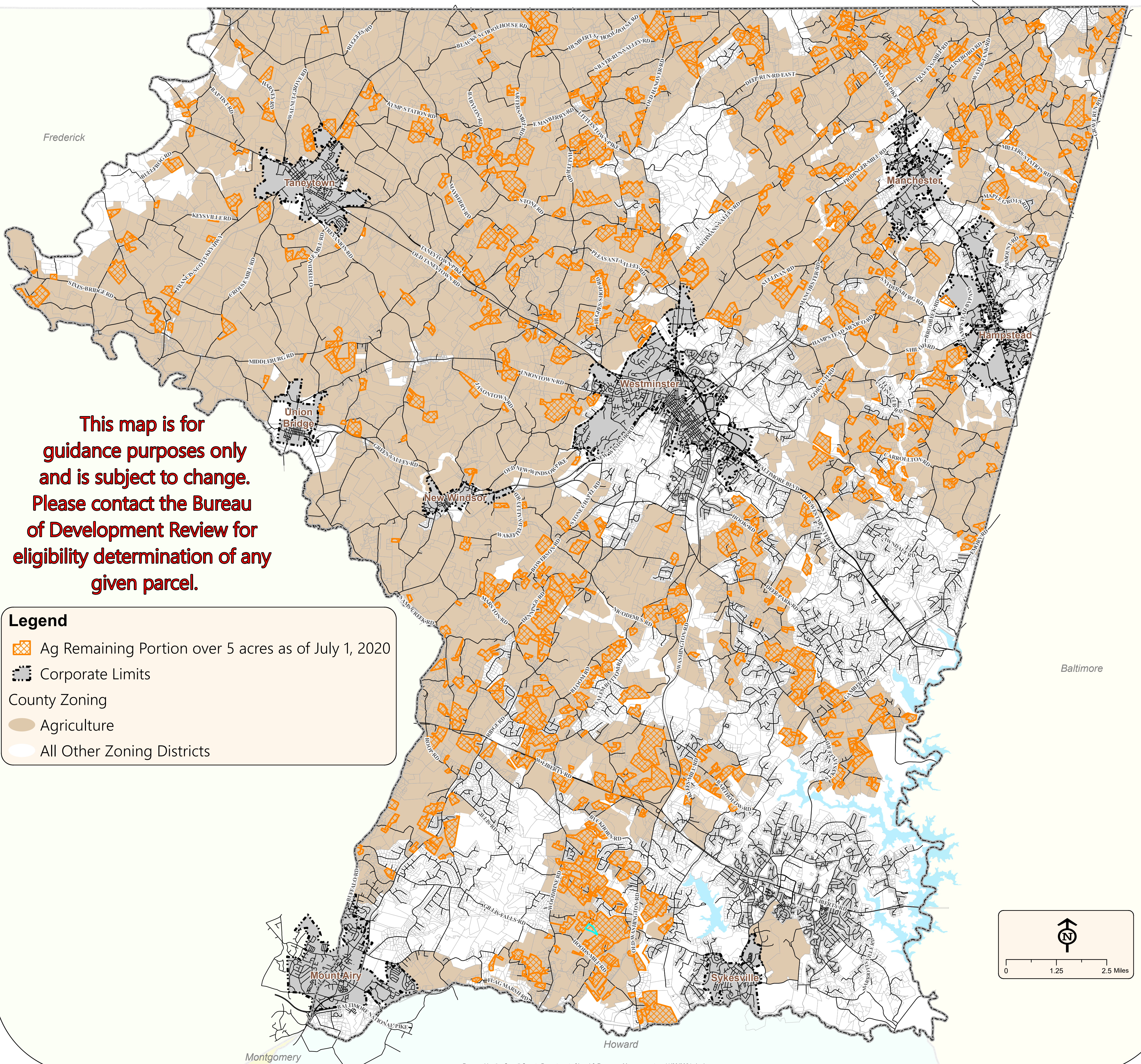


Carroll County Ag Remaining Portions





5 Acres and Greater

as of July 1, 2020



This map is for guidance purposes only and is subject to change. Please contact the Bureau of Development Review for eligibility determination of any given parcel.

Legend

-  Ag Remaining Portion over 5 acres as of July 1, 2020
-  Corporate Limits
- County Zoning
-  Agriculture
-  All Other Zoning Districts

