



# Carroll County Agricultural Land Preservation

Within Department of Land  
& Resource Management

As of October 1, 2022

## Accomplishments

- #1 in Maryland for number of acres preserved
- #2 in US for acres preserved through easement purchase
- Top 5 in US for similar programs administered by local governments
- 2021 Maryland Sustainable Growth Award for Preservation and Conservation



## Responsibility Highlights

- Code Chapter 159
- Administration of four voluntary, permanent land preservation programs
- Support and facilitate Agricultural Land Preservation Advisory Board

## Ag Pres Programs Available in Carroll County

- Maryland Agricultural Land Preservation Foundation (MALPF) Program
- Carroll County Easement Purchase Program
- Rural Legacy Program
- Critical Farms Program (MALPF)

**50%** of Carroll County's land mass is in agricultural use



Carroll County ranks **1st** in Maryland for number of acres preserved



Agriculture is **#1** Carroll's industry



Carroll County aims to preserve **100,000** acres of farmland minimum  
Carroll reached 75,000 acres permanently preserved in 2020



Every **\$1** invested in Ag Pres stimulates \$1.80 - \$2.00 in economic benefit to community



Carroll County ranks **3rd** in Maryland for production of sheep, goats, wool, mohair, and milk



Carroll County ranks **1st** in Maryland for gross sales of Christmas trees



Carroll County ranks **#3** in the state for sales of milk from cows



Carroll County ranks **2nd** in the U.S. for number of acres preserved through easement purchase  
More than 723 farms are preserved in Carroll County



Ag products sold in Carroll County valued at **\$110 million** annually



## Ag Pres Story

- Interactive story and maps
- Facts, history, accomplishments, photos, etc.



Carroll Ag Pres Story *Scan Me*

<https://arcg.is/1fGWW8>

## Cont@ct Us

Program Manager—JP Smith

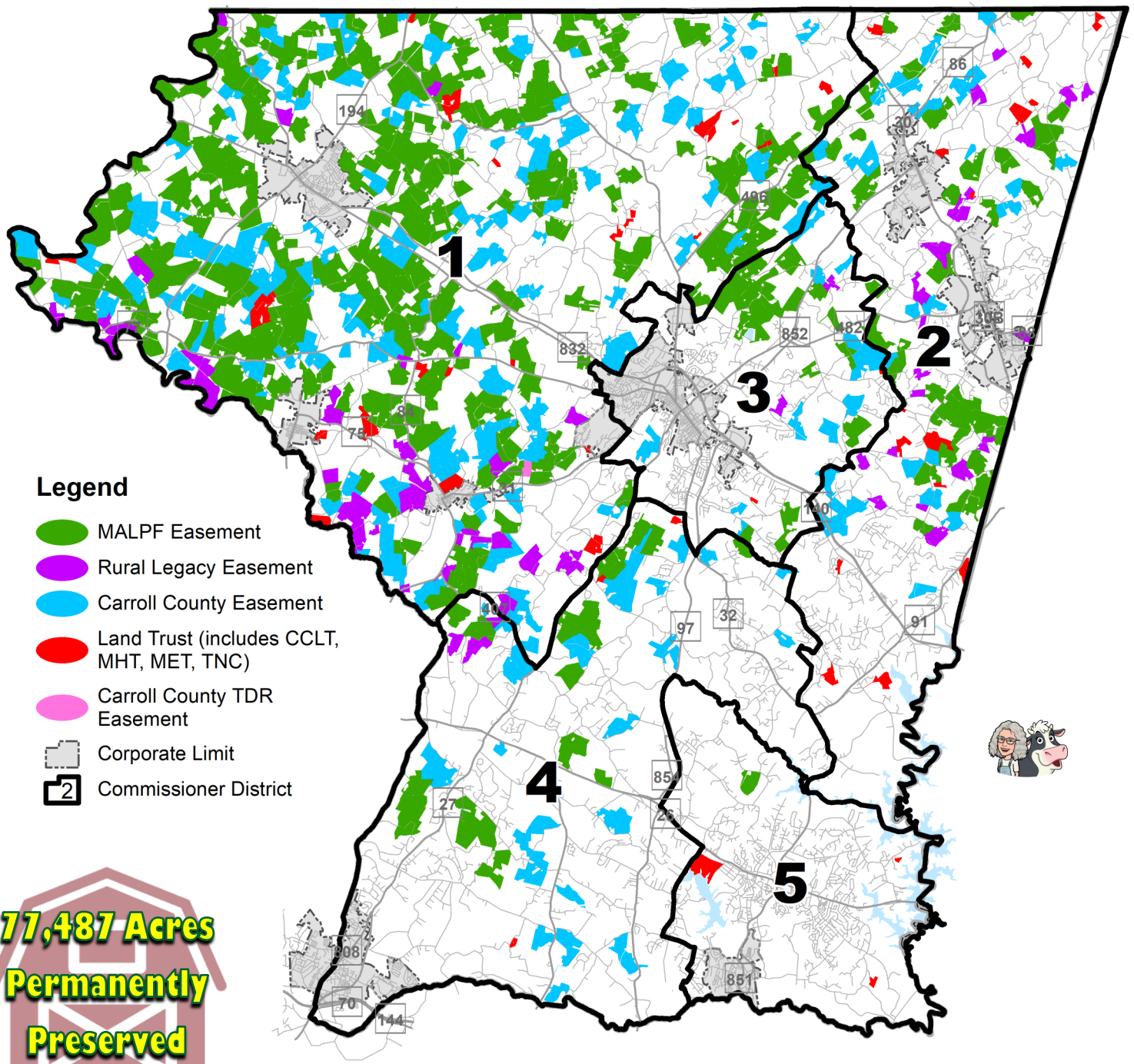
↳ Preservation Specialist—Jackie Brathuhn

↳ Office Technician—Donna Black

Phone: 410-386-2214

Email: [carrollagpres@carrollcountymd.gov](mailto:carrollagpres@carrollcountymd.gov)

Website: [carrollcountymd.gov/agpres](https://carrollcountymd.gov/agpres)



## Agricultural Land Preserved (as of 10/1/2022)

Program	Acres	# of Farms
MALPF (includes Critical Farms)	45,659	392
Carroll County	23,951	218
Rural Legacy	5,263	63
Land Trusts & Conservancies	2,563	49
Carroll County TDR	52	1
<b>TOTALS</b>	<b>77,487</b>	<b>723</b>

Note: Data as of October 1, 2022. Colors correspond to map

