

Range Fees

Cash/Check Only on-site

No Charge for 17 & Under (Must be with paying adult 21 or over)

	Carroll County Residents	Out of County Residents
Daily Fee:	\$10	\$15
Season Pass: (July 1-June 30)	\$60	\$100
Life Member:	\$300	\$600

Military & Veteran's Discounted Fees: (Must Present ID/Documentation)

Daily Fee:	\$5	\$10
Season Pass: (July 1-June 30)	\$30	\$70

All users are required to sign an agreement to obey all rules and to assume personal responsibility for any personal injury and/or damage to property.

Eye and ear protection, and targets are available for cash purchase at the range: eye \$3, ear 25¢, targets 25¢.

Purchase Season Passes & Lifetime Memberships Online

Season passes and lifetime memberships can be purchased at ccrecpark.org with Visa, MasterCard, & Discover.

You must bring your printed receipt (proof of purchase) and provide a valid ID to obtain your membership badge at the range.

Facility Construction

The Hap Baker Firearms Facility is designed and built to meet National Rifle Association range specifications. Design elements focus on safety, providing many safeguards to contain fire. Noise abatement is another focal point. Sound and safety baffles form a definitive shield near the firing line. Earthen berms and aggregate filled safety walls provide additional sound absorption and safety features. The ranges available include 25, 50, 100 and 200 yards; pistol range is 5-17 yards.

Objective

Few inventions have shaped American history more than the firearm. The purpose of the Hap Baker Firearms Facility is to provide firearms enthusiasts a safe environment for practicing their sporting activities, and police units with a facility for conducting certification, training, and practice operations. The primary objectives of this facility are safety, education and training, good sportsmanship, and good public relations.



The Americans with Disabilities Act applies to the Carroll County Government and its programs, services, activities and facilities. Anyone requiring an auxiliary aid or service for effective communication or who has a complaint should contact The Department of Citizen Services, 410.386.3600 or 1.888.302.8978 or MD Relay 7-1-1/1.800.735.2258 as soon as possible but no later than 72 hours before the scheduled event.

Hap Baker Firearms Facility



**1400 Baltimore Boulevard
Westminster, MD 21157**

(on the grounds of the Northern Landfill)

(410) 386-2103

(Recreation & Parks main office phone number)

hapbakerfirearmsfac@carrollcountymd.gov

**9 Lanes - Pistol
(5 - 17 yards)**

**10 Lanes - Rifle
(25 - 200 yards)**



Hours of Operation

Open rain or shine
Closed on Mondays & Tuesdays

Hours of Operation

Jan – Mar, 10am – 4pm (Fri – Sunday)
April – Oct, 10am – 6pm (Wed – Sunday)
Nov – Dec, 10am – 4pm (Wed – Sunday)

Holiday Schedule:

OPEN Christmas Eve, **10am—1pm**
(only if Christmas Eve falls on a normal operating day)

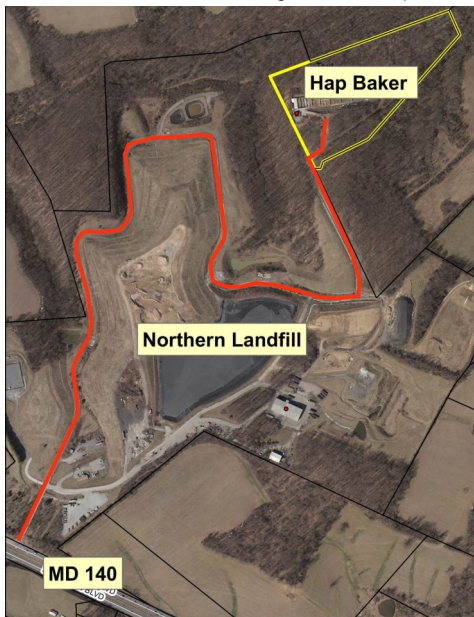
CLOSED Thanksgiving Day, Christmas Day & New Year's Day

Individual user time is limited during peak hours
The range is supervised at all times.

Directions

The facility is located off Route 140 just North of Reese Road, in Westminster, Maryland at 1400 Baltimore Blvd.

From the Baltimore Beltway (I695): take Route 795 (Northwest Expressway) to Route 140 North (Baltimore Blvd.) toward Westminster. Use the entrance to the Carroll County "Northern Landfill" and follow the signs to the Hap Baker range.



Safety Rules and Regulations

SAFETY IS MORE THAN A SET OF RULES:

Gun owners must accept personal responsibility for self-education and for teaching others about safety. All Facility users MUST adhere to posted rules. Failure to do so may result in eviction from the premises and/or revocation of user badge. The following is a list of major Facility rules. Users are expected to familiarize themselves with ALL rules and strictly adhere to them. These rules were designed for the safety of the Facility users and the public alike.

- A Range Officer employed by the Department of Recreation and Parks shall be in complete charge at all times. The Range Officers decision and or discretion is final in all cases.
- **Upon a call of "cease fire", all shooters must stop shooting immediately and empty all firearms, magazines out, slides back, actions open.**
- **Targets shall be changed only after an "all clear" from the Range Officer.**
- DO NOT leave any firearms unattended.
- Firearms must be kept open, and magazines removed at all times when not in use. When handling any firearms, muzzles shall be pointed in upward position with action open and magazines removed.
- A loaded firearm must be kept pointed downrange at all times.
- In the event of a misfire, keep firearm pointed downrange and alert a Range Officer.
- Eye and ear protection MUST be worn at all times while on the firing line.
- Your firing line position and target position must correspond. Angle firing is not permitted on any range.
- No Class 3 weapons are to be fired in the fully automatic mode.
- There must be at least a 2 second delay between each shot.
- When the line is cold, no firearm may be handled.
- No open toed shoes allowed
- Alcoholic beverages are strictly prohibited. Persons suspected of being under the influence of alcohol, or any other depressant or stimulant, will not be permitted to use the Facility.

Safety Rules and Regulations

- No Pets are allowed on the premises.
- No smoking or E-cigarettes are permitted on the firing line or in any structure at the facility.
- No littering. Individuals or groups using the Facility are responsible for keeping the area clean. This includes policing the area of brass.
- Shooting shall be with paper targets only on our stationary frames.
- Hap Baker Facility identification badges must be worn visibly while on the premises. No badge is to be loaned or transferred to another person at any time. I.D. may be required.

Ammunition/Load Limitations:

- ◆ Handgun/rifle calibers are not to exceed 50 calibers, with the exception of black powder. At pistol range all black powder must be kept on lower shelf.
- ◆ Military tracer and armor piercing rounds shall not be used.
- ◆ BMG's are not allowed.
- ◆ Shotguns must be fired with rifle slugs only. All Shotguns must have front sight and rear adjustable sight or scope.

Rifle Range

- At Rifle lanes persons under 18 years of age must be accompanied and supervised by a paying adult (age 21 and older) at all times.
- All Mosin Nagant rifles shall be loaded with one round at a time, no exceptions.
- A firearm shall be loaded only on the firing line (with the exception of muzzloaders see range officer for specific instructions).

Pistol Range

- At Pistol lanes persons under 21 years of age must be accompanied and supervised by a paying adult (age 21 and older) at all times.
- At Pistol lanes, place paper targets BELOW RED LINE on target board.
- At Pistol lanes, do not move ahead of the firing line for any reason.
- Holstering of firearms or drawing from the hip is not permitted (no exceptions).