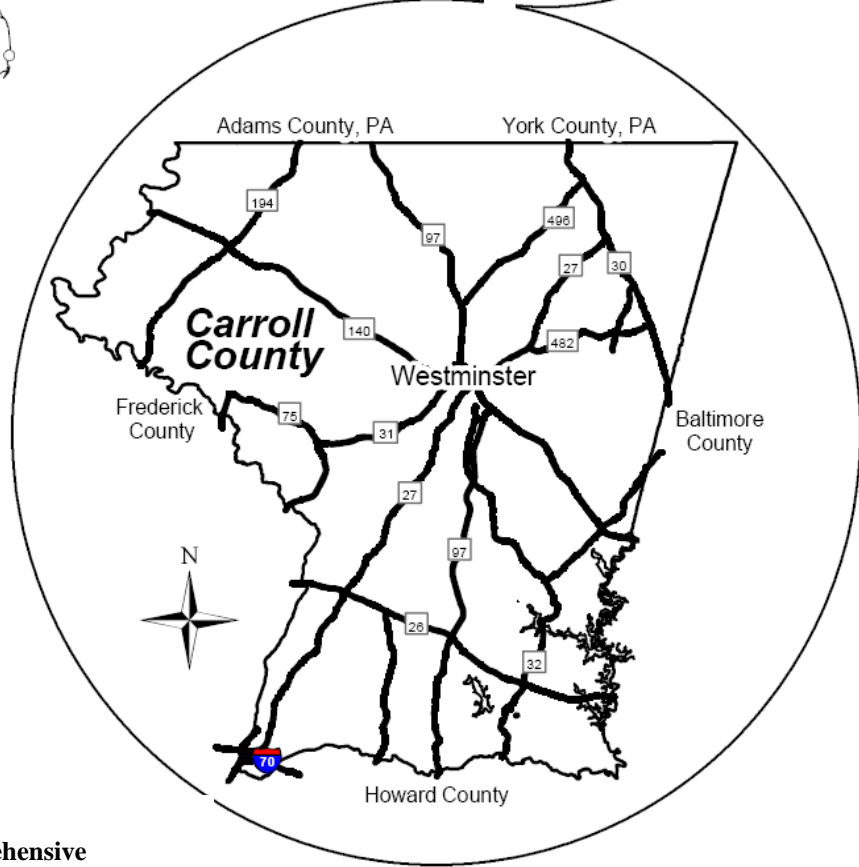
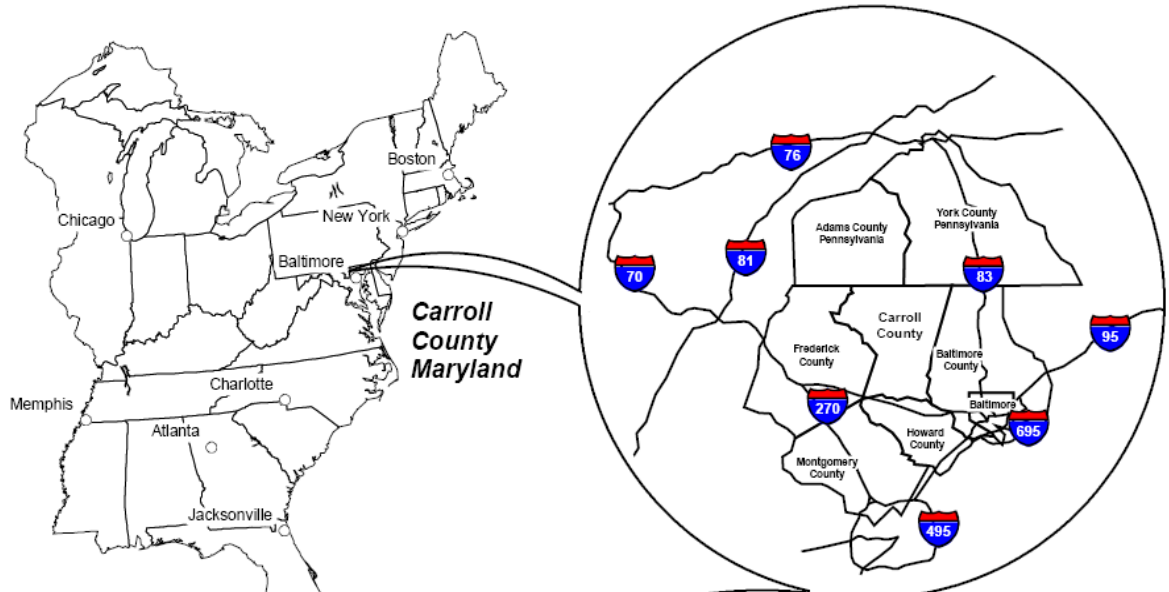


# Geography/Demographics of Carroll County, Maryland



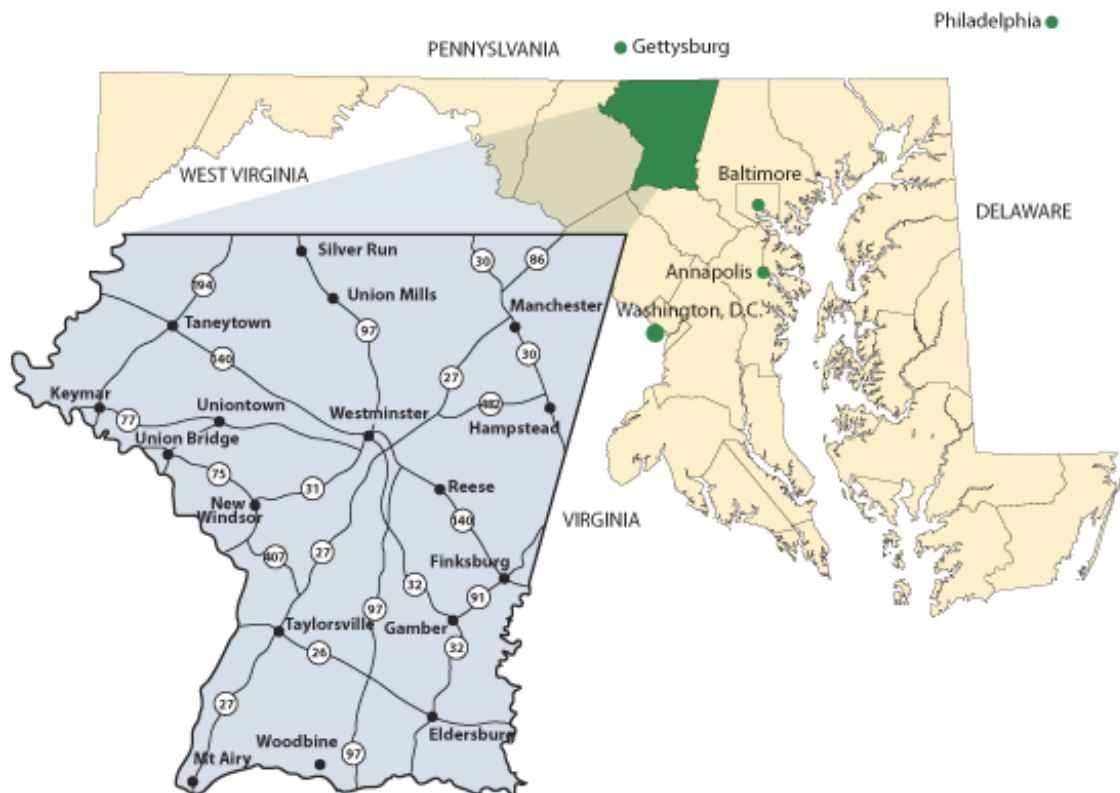
As of March 2016

<b>Population:</b>	<b>172,496</b>
<b>Households:</b>	<b>62,322</b>
<b>Square Miles:</b>	<b>452</b>
<b>Persons Per Sq. Mile</b>	<b>382</b>

Source: U.S. Census Bureau,  
Carroll County Department of Comprehensive  
Planning

## History

Carroll County was created in 1837 from parts of Baltimore and Frederick Counties. The County was named for Charles Carroll of Carrollton. Carroll was a Marylander and the last surviving signer of the Declaration of Independence. He died in 1832 at the age of 95. During the American Civil War, the population of Carroll County was sharply divided between supporters of the Union and the Confederacy. In 1863, there were historic troop movements through the County as part of the Gettysburg campaign. On June 29, 1863, the cavalry battle of Corbit's Charge was fought in the streets of Westminster. This would later be recognized as a contributing factor in the eventual defeat of Robert E. Lee's army at Gettysburg.



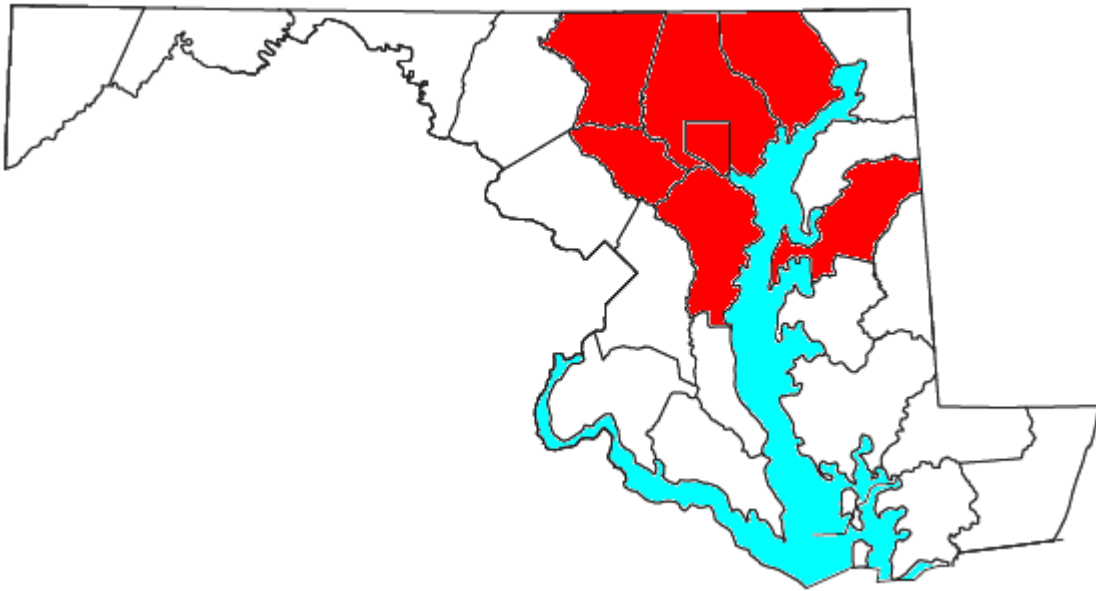
### ***Carroll County***

*a great place to live, a great place to work, a great place to play*

## **Today**

Carroll County is bordered on the north by the Mason-Dixon Line. The Patapsco River forms the southern border and Liberty Reservoir forms part of the eastern border. Carroll County is bordered on the west by the Monocacy River and Sam's Creek. Carroll has eight incorporated municipalities: Taneytown, Hampstead, Manchester, Mount Airy, New Windsor, Sykesville, Union Bridge, and Westminster, the County Seat.

Carroll County is located within the Baltimore–Columbia–Towson Metropolitan Statistical Area, which has over 2.7 million people. Located in the heart of the Mid-Atlantic, the area also includes Baltimore City, Anne Arundel County, Baltimore County, Harford County, Howard County, and Queen Anne's County.



### ***Carroll County***

*a great place to live, a great place to work, a great place to play*

## The Carroll County Seal

The Carroll County Seal was established in the minutes of the Commissioners of Tax for Carroll County on June 5, 1837, and became the County's official seal on July 1, 1977. The seal consists of "three concentric circles, with the inscription 'Carroll County Maryland' inserted between the inner and middle circles also having two stylized six-leaved blossoms located, one each, on opposite sides of the same space between the inner and middle circle, also within the inner circle is a replica of the four-horse freight wagon with the year 1837 imposed above the wagon." When legislation was enacted, effective July 1, 1977, there was no mention of colors for the seal, although the colors used are red, white, blue, and brown.



### ***Carroll County***

*a great place to live, a great place to work, a great place to play*

## Attractions

### **Carroll County Farm Museum**

The Carroll County Farm Museum presents rural life as it was in the 19th century. In addition to the main house, built in 1852, the 140-acre museum includes barns, a smokehouse, springhouse, blacksmith shop, craftsmen's workshops, and exhibit areas that contain an abundance of early farm memorabilia. Farm animals add to the authenticity of the setting. Rental facilities are available for meetings, company picnics, family reunions, weddings, and receptions. For more information on the Farm Museum, refer to:



<http://ccgovernment.carr.org/ccg/farmmus/default.asp>.

### **Historical Society of Carroll County**

The Historical Society of Carroll County, founded in 1939, owns three historic properties on East Main Street in Westminster. The 1807 Sherman-Fisher-Shellman house is furnished to interpret the lives of the first owner, Jacob Sherman, and his family who lived in the house from 1807-1842. The adjacent Kimmey House is home to the Shriver-Weybright Gallery where exhibits detail the history of Carroll County and its residents. Cockey's Tavern provides an



expanded museum shop, public programming space, and the tourist information center. For more information on the Historical Society of Carroll County, refer to: <http://hsccmd.org/>.

### ***Carroll County***

*a great place to live, a great place to work, a great place to play*

## Strawbridge Shrine

In the Wakefield Valley/New Windsor area of Carroll County, Robert Strawbridge formed the first Methodist class in America and built the first log meeting house around 1763. Although without official sanction, American Methodists first received Baptism and Holy Communion by his hand. The Strawbridge House was designated a National Methodist Shrine by the General Conference of 1940, and was purchased by the Strawbridge Shrine Association in 1973.

Today the Strawbridge House and farm, along with John Evans Meeting House Replica, are available for tours. For more information on the Strawbridge Shrine, refer to: <http://www.strawbridgeshrine.org>



## Sykesville Colored Schoolhouse

The Sykesville Colored Schoolhouse was built between July and December 1903 at a cost of \$530.50. Between January 1904 and May 1938 it was a one-room schoolhouse, managed by local community trustees, for children of the surrounding black community from both sides of the Patapsco River during the days of segregation. This historic schoolhouse has been restored and furnished to its 1904 appearance. For more information on the Sykesville Colored Schoolhouse, refer to:



[http://sykesville.exploremd.us/tourism/attractions/sykesville\\_colored\\_schoolhouse/](http://sykesville.exploremd.us/tourism/attractions/sykesville_colored_schoolhouse/)

## *Carroll County*

*a great place to live, a great place to work, a great place to play*

## **Sykesville Gate House Museum**

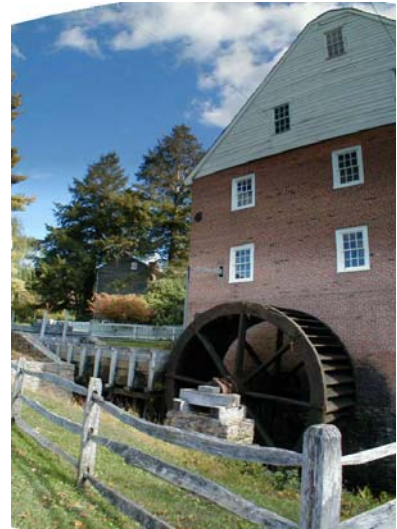
The Sykesville Gate House Museum strives to interpret the abundant history of the Town of Sykesville and its surrounding communities through its collections, exhibits, and special events. Historic home and architectural enthusiasts may opt to take the guided tour of the building's other purpose – home to Springfield Hospital Center employees from 1904 until the late 1980s. For more information on the Sykesville Gate House Museum, refer to:



[http://sykesville.exploremd.us/tourism/attractions/sykesville\\_gate\\_house\\_museum/](http://sykesville.exploremd.us/tourism/attractions/sykesville_gate_house_museum/)

## **Union Mills Homestead and Grist Mill**

The Union Mills Homestead began in 1797 when David and Andrew Shriver purchased a large tract of land along the Big Pipe Creek. The site was perfect for the enterprises that the Shriver brothers hoped to start. The Big Pipe Creek provided an excellent source of water for a mill, the fertile valley was good farmland, and the surrounding rolling hills contained heavy stands of black oak, which could furnish tanbark for a tannery. Soon the brothers entered into a contract with Frederick County millwright, John Mong, to construct a set of mills: a grist mill and a saw mill. While the Grist Mill and Saw Mill were under construction, David and Andrew Shriver also started the main part of the house. To these early endeavors, the brothers added a tannery, cooper shop, and a blacksmith's shop. Now David and Andrew truly had the beginning of an early industrial park. The growing enterprises soon took the name “Union Mills” because of the partnership of the two brothers and their various businesses. The small settlement that grew around the Homestead also became known as Union Mills. For more information on the Union Mills Homestead, refer to: [www.unionmills.org](http://www.unionmills.org).



## ***Carroll County***

*a great place to live, a great place to work, a great place to play*

## **Carroll Arts Center**

The Carroll County Arts Council, in partnership with the City of Westminster, transformed this 1937 art deco Carroll Theatre into a multi-purpose community arts center. Opened in April of 2003, the renovated facility includes a 263-seat theatre, two well-equipped art classrooms, and two large art galleries. The Carroll Arts Center offers a wealth of cultural opportunities including musical concerts, lectures, film, dramatic productions, art exhibits, classes, and camps. For more information on the Carroll Arts Center, refer to: <http://carrollcountyartscouncil.org/>.



## **Piney Run Park**

Piney Run Park, opened in 1974, features a 300-acre lake as its centerpiece and provides multiple recreational activities such as fishing, boating, boat rentals, and park-sponsored fishing tournaments. The lake is surrounded by 550 acres of fields, forest, and open spaces containing over five miles of hiking trails, tennis courts, playgrounds, a climbing rock, picnic tables, and comfort stations. The Piney Run Nature Center, Yurt, and six pavilions, available to rent during open season, are all located near the main entrance accessed off of White Rock Road. For more information on Piney Run Park, refer to: <http://ccgovernment.carr.org/ccg/recpark/pineyrun/>.



## **Hashawha Environmental Center**

Hashawha is located in northern Carroll County off Route 97 North. Facilities at Hashawha include an administration building with meeting rooms, a dining hall, and a trail lined wetlands area. Bear Branch Nature Center is located next to Hashawha Environmental Center. This facility provides nature study and environmental education to all visitors. For more information on the Hashawha Environmental Center, refer to: <http://ccgovernment.carr.org/ccg/recpark/hashawha/>



## ***Carroll County***

*a great place to live, a great place to work, a great place to play*



# How Carroll County Government Operates

---

In Maryland, county governments may be organized as charter counties, code counties, or non-home-rule counties, and all act under limitations legislated by the State government. Carroll is a non-home-rule county governed by an elected five-member Board of County Commissioners, where each member is allowed one vote and they elect their own officers. The Board exercises the powers conferred upon it by the General Assembly of Maryland, including authorization to issue debt to finance capital projects.

The County Commissioners are elected for four-year terms (non-presidential election years). Each Commissioner is elected by district, with Carroll County divided by voting population into five districts. All County Commissioners must live within Carroll County and be a resident within their elected district.

Among the Commissioners' duties are: establishing policy, adopting the operating and capital budgets, setting the tax rate, levying and collecting taxes, appointing commissions and boards, approving ordinances and resolutions, and recommending legislation to the State Delegation. Positions at the cabinet level are appointed by the Board of Commissioners. These positions represent the top level of management for Carroll County who report directly to the Board. The Commissioners also appoint residents to various County advisory boards that make policy recommendations. In addition, the County Commissioners purchase and maintain County property, approve road construction and maintenance, and serve as the County's chief elected officials in dealing with other counties, the State, and Federal governments.

The Board of County Commissioners approves the County operating and capital budgets after each agency submits its requests and after a public hearing has been conducted. The budget ordinance must be adopted before June 1.

Federal and State funds contribute a percentage of the cost of education, social services, health-related activities, aging programs, emergency services, agricultural extension services, and other programs.

Carroll County's eight incorporated municipalities function as autonomous units of local government. They are Hampstead, Manchester, Mt. Airy, New Windsor, Sykesville, Taneytown, Union Bridge, and Westminster. The towns provide police protection and other vital services, and (with the exception of Hampstead and Sykesville) operate their own water and sewer systems. The municipalities derive operating revenues from water/sewer user fees, town taxes (rates are set by the councils under State guidelines), and fees for miscellaneous permits and assessments.

# The Budget Process

The budget has several major purposes. It focuses the County's long-range plans and policies on services and programs, serves as a vehicle to communicate these plans to the public, details the costs of County services and programs, and outlines the revenues (taxes and fees) that support the County's services, including the rate of taxation for the coming fiscal year. Once the budget has been adopted by the Board of County Commissioners, it becomes a work plan of objectives to be accomplished during the next fiscal year.

Departments are accountable for budgetary control throughout the fiscal year. The Department of Management and Budget (DMB) examines expenditure patterns, compares the patterns to budget plans, and initiates corrective action, if necessary, during the fiscal year.

The budget development process begins with revenue projections for the County for the upcoming fiscal year and the following five years. These revenue estimates will determine how much money is available to provide government services, including education, public safety, public facilities, community services and other functions of government.

For the capital process, direction for preparation is sent out in July. Requests are then submitted in September to the budget office.

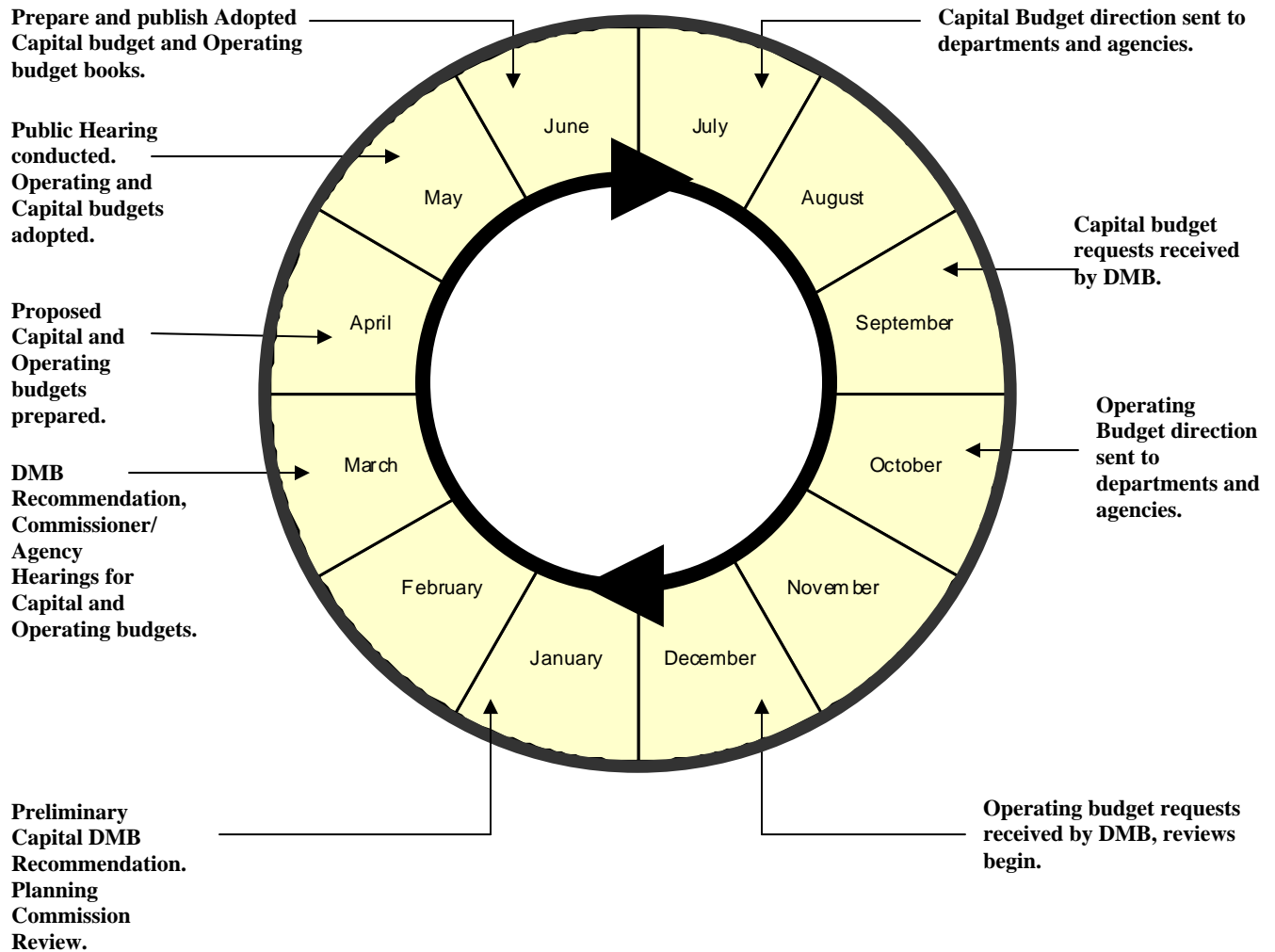
The Department of Management and Budget then prepares the preliminary recommended capital budget for the ensuing fiscal year and the next five fiscal years to present to the Planning and Zoning Commission for review and recommendation. The Commissioners, with the assistance of the Budget office, consider these recommendations in developing their capital budget.

The operating process begins by sending out the budget package in October. Requests are submitted to the Budget office in December. In March, the Department of Management and Budget presents the recommended budget (Operating and Capital) and the agency hearings occur. Not later than sixty days prior to the end of the fiscal year, the County Commissioners announce their Proposed Budget for the ensuing fiscal year for public review and discussion. A public hearing is held in May on the Proposed Budget along with the current tax levy. A 10-day waiting period is held for public comment.

The Annual Budget and Appropriation Ordinance must be adopted on or before the first day of the last month of the fiscal year currently ending. After the budget is adopted, at least six copies of the detailed budget are reproduced to be kept available for public inspection. By the last day of June, each of the six libraries will contain the adopted Operating and Capital budget books.

# The Budget Process

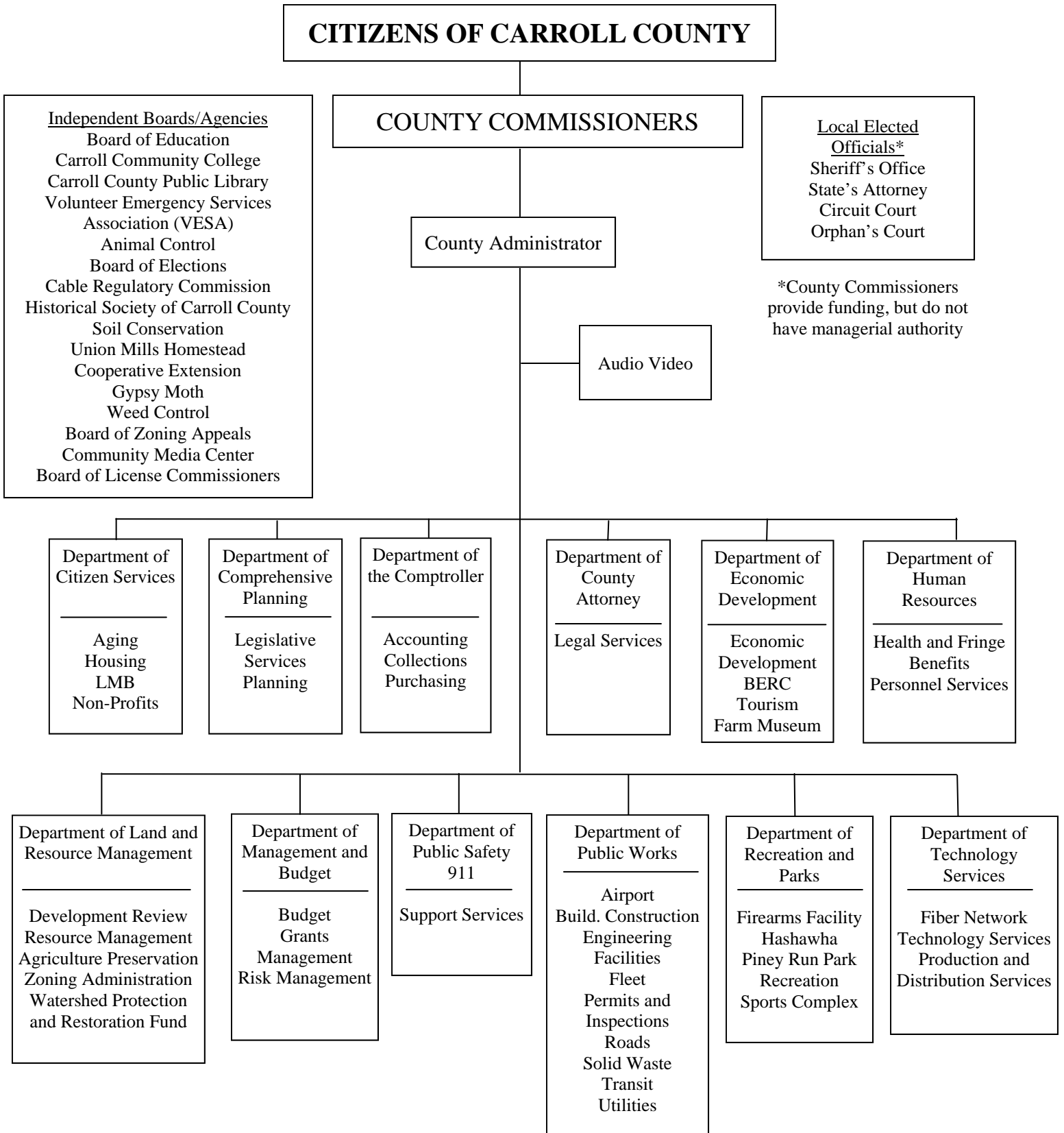
The following diagram illustrates the budget phases which span the fiscal year that begins July 1.



Once the Budget is adopted, transfers within a fund can be made with the appropriate approval but the total Budget cannot be increased or decreased without a public hearing.

# CARROLL COUNTY GOVERNMENT

## Organizational Chart



## **Other Planning Processes Links**

Other County planning processes have an impact on how Carroll County Government develops operating and capital budgets. The planning process that has the most impact on the budget is the twenty-year County Comprehensive Plan, or Master Plan. The Department of Comprehensive Planning is responsible for developing and implementing the County Master Plan. Community Investment Plan review, site selection, and land banking for future schools, roads, and other public facilities are administrative functions of the Department.

The Department of Comprehensive Planning is responsible for comprehensive, county-wide master planning. Land use plans are made and implemented working with the Carroll County Planning and Zoning Commission authorized under the Land Use Article. The several functions within Carroll County are designed to assure County projects and programs conform to the County Master Plan, that current and long-range County planning serve to implement the Plan, and that land use and policy decisions are in accordance with the Plan. Among the ways the Department fulfills this function are: water and sewer master planning, comprehensive planning for the County and incorporated towns and other functional plans for the county, major street and road planning, and the town/county liaison planners.

Enterprise functions, such as water and sewer, solid waste management, and airport operations also develop long-term plans for handling future growth projections. Other planning functions include commercial/industrial building design expectations, land preservation, parks, and hazard mitigation.

Below are links to County websites for planning processes:

Adopted 2014 Carroll County Master Plan

<http://ccgovernment.carr.org/ccg/compplanning/MasterPlan/2014/>

Carroll County Master Plan 2000

<http://ccgovernment.carr.org/ccg/compplanning/MasterPlan/2000/>

Carroll County Water and Sewer Master (MDE Approved)

<http://ccgovernment.carr.org/ccg/compplanning/Functional/WaterSewer/>

Water and Sewerage Master Plan – Amendments

<http://ccgovernment.carr.org/ccg/compplanning/Functional/WaterSewer/Amendments.aspx>

Water Resource Element (2010)

<http://ccgovernment.carr.org/ccg/compplanning/Functional/WRE.aspx>

Freedom Community Comprehensive Plan (2001)

<http://ccgovernment.carr.org/ccg/compplanning/Community/Freedom.aspx>

Hampstead Community Comprehensive Plan (2004)  
<http://ccgovernment.carr.org/ccg/compplanning/Municipal/Hampstead.pdf>

Manchester and Environs Comprehensive Plan (1998)  
<http://ccgovernment.carr.org/ccg/compplanning/Municipal/Manchester.pdf>

Mount Airy Environs Community Comprehensive Plan (2006)  
<http://ccgovernment.carr.org/ccg/compplanning/Community/MtAiry.aspx>

New Windsor Community Comprehensive Plan (2007)  
<http://ccgovernment.carr.org/ccg/compplanning/Municipal/NewWindsor.pdf>

Westminster Environs Community Comprehensive Plan (2007)  
<http://ccgovernment.carr.org/ccg/compplanning/Community/Westminster.aspx>

Finksburg Corridor Plan (2013)  
<http://ccgovernment.carr.org/ccg/compplanning/Community/Finksburg.aspx>

Taneytown Community Comprehensive Plan (2010)  
<http://www.taneytown.org/documents.asp>

Union Bridge Community Comprehensive Plan (2008)  
<http://ccgovernment.carr.org/ccg/compplanning/Municipal/UnionBridge.pdf>

2012 Land Preservation, Parks & Recreation Plan  
<http://ccgovernment.carr.org/ccg/compplanning/Functional/Parks.aspx>

Hazard Mitigation (2013)  
<http://ccgovernment.carr.org/ccg/compplan/hazard/default.asp>

Emergency Operations Plan (2007)  
<http://ccgovernment.carr.org/ccg/pubsafe/eop2007.pdf>

Ten Year Solid Waste Management Plan (2006)  
<http://ccgovernment.carr.org/ccg/pubworks/swmp/>

# Reading a Typical Budget Page

Previous year actual expenditures

Current Budget adopted by the Board of County Commissioners in May

Current Budget including mid-year adjustments, annualized for comparison purposes

The Board of County Commissioner's budget for next year

**Facilities**

Description	Actual FY 13	Original Budget FY 14	Adjusted Budget FY 14	Budget FY 15	% Change From Orig. FY 14	% Change From Adj. FY 14
Personnel	\$2,087,711	\$2,210,610	\$2,220,060	\$2,286,210	3.42%	2.98%
Benefits	572,670	661,190	661,920	665,380	0.63%	0.52%
Operating	2,550,795	6,206,890	6,206,890	6,474,430	4.31%	4.31%
Capital	89,243	24,210	24,210	37,920	56.63%	56.63%
<b>Total</b>	<b>\$5,300,419</b>	<b>\$9,102,900</b>	<b>\$9,113,080</b>	<b>\$9,463,940</b>	<b>3.97%</b>	<b>3.85%</b>
<b>Employees FTE</b>	<b>51.50</b>	<b>51.50</b>	<b>51.50</b>	<b>51.50</b>	<b>-----</b>	<b>-----</b>

Note: The Adjusted Budget includes budget changes made during the year. Ongoing mid-year changes have been annualized for comparison purposes.

**Contact**  
 Thomas J. Rio, Director of Public Works (410) 386-2284  
 Heidi K. Pepin, Senior Budget Analyst (410) 386-2082  
<http://ccgovernments.carr.org/ccg/facility/default.asp>

**Mission and Goals**  
 The Bureau of Facilities' mission is to maintain and clean, orderly, and attractive appearance of grounds, structures, and facilities.

**Goals include:**

- Provide an efficient and effective maintenance program that emphasizes proactive maintenance
- Deliver a timely and professional response to reactive maintenance service calls
- Provide immediate response to emergency maintenance requests

**Description**  
 The Bureau of Facilities provides maintenance, repairs and renovations for buildings at forty-five locations, with multiple buildings at several sites, throughout Carroll County. Full service maintenance is provided for air conditioning, heating, ventilating, plumbing, and electrical systems, and all other aspects involving the maintenance of building structures and equipment. Emphasis is placed on preventative maintenance efforts to reduce emergency calls and extend the useful life of buildings and equipment.

Facilities maintain and manage all of the grounds at County buildings, parks, and other County properties including those purchased for future use. This includes:

- Turf and landscape
- Woodlands and wildlife

**Program Highlights**  
 Recent projects include:

- Replacement of the Learning Resource Center roof at Carroll Community College
- Elevator upgrade at the Detention Center
- Upgrade of the fire alarm systems at various County buildings

**Budget Changes**

- Personnel increases from the FY 14 Original to the Adjusted due to position reclassifications.
- A 3% salary increase is included in FY 15.
- Operating increases primarily for upgrades to the elevators at the Courthouse Annex.
- Capital Outlay increases for the purchase of small equipment, including a portable welder and a motorized floor scrubber.

**Positions**

Title	Type	FTE
Administrative Office Associate	Full-time	1.00
Bureau Chief	Full-time	1.00
Custodian	Full-time	4.00
Electrician	Full-time	3.00
Facilities Manager	Full-time	2.00
Facilities Supervisor	Full-time	5.00
HVAC Mechanic	Full-time	4.00
Maintenance Technician	Full-time	23.00
Service/Maintenance	Contractual	0.50
Technical Support Coordinator	Full-time	1.00
Trades Specialist	Full-time	7.00
<b>Total</b>		<b>51.50</b>

Shows the budget of the department by type of expenditure

Total full-time equivalent positions in the agency/bureau

Significant changes from the prior year budget

Total authorized full-time equivalent positions in the agency/bureau

The budget document presents, in a standardized format, the operating budget for each department. The typical budget page describes the functions and goals of the organization, actual and planned expenditures over a three-year period, and major highlights and changes in the new budget.

\*An explanation of full-time equivalent positions is located in the glossary.