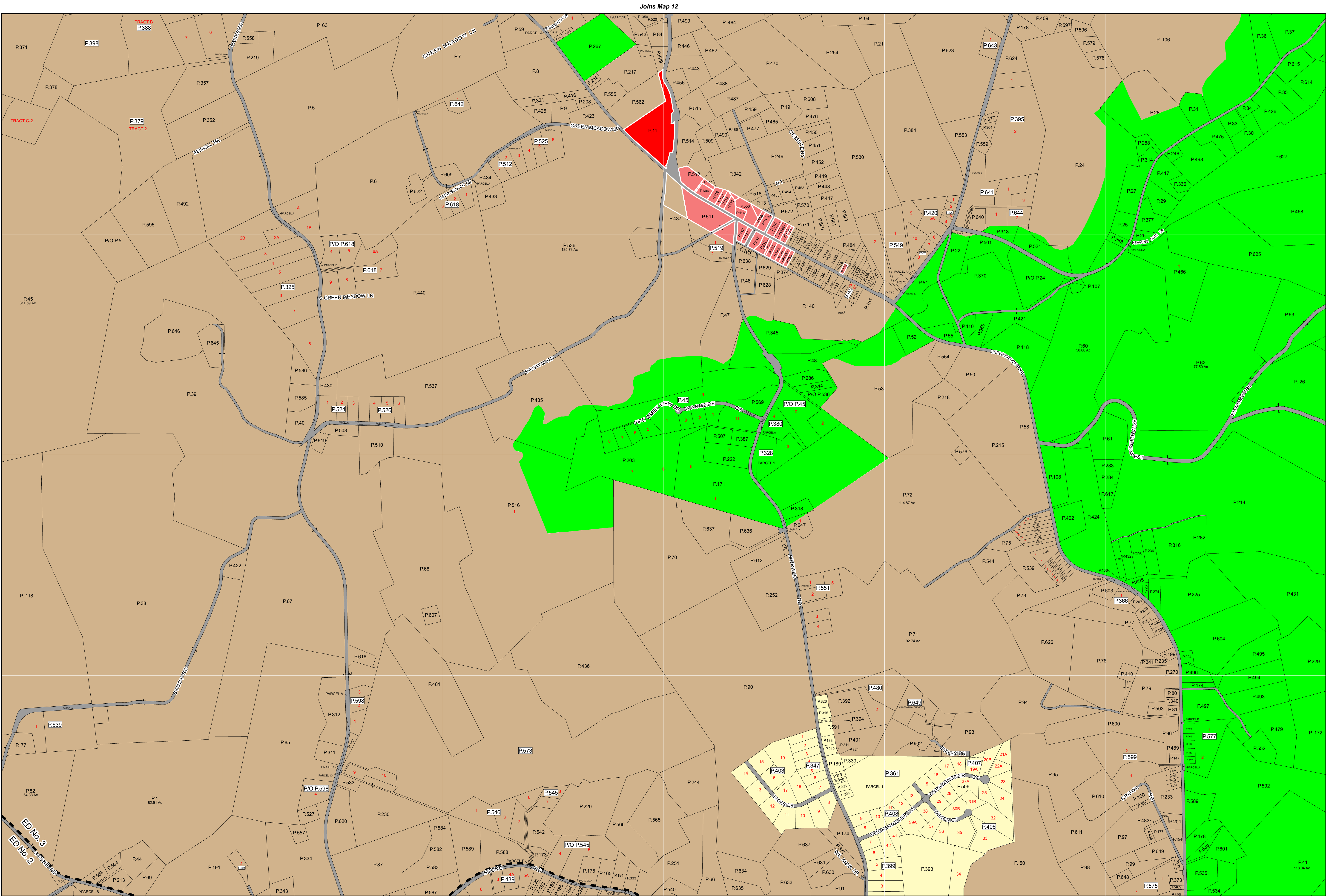


Joins Map 20



Joins Map 12

Joins Map 30

Zoning Map 21

Properties outlined in white are those that are the subject of this rezoning.

Zoning Districts

- R-7,500
- R-10,000
- R-20,000
- R-40,000
- Conservation
- Agricultural
- Mobile Home Park
- Heritage

DRAFT
9/12/2019

Comprehensive Rezoning

- C-1
- C-2
- C-3
- I-1
- I-2

Overlays

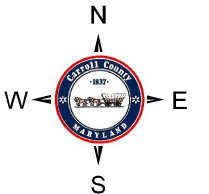
- Mineral Resource Overlay
 - MR (Recovery Area)
 - VRA (Viable Resource Area)
 - MRN (Notification Area)

Historic District Overlay

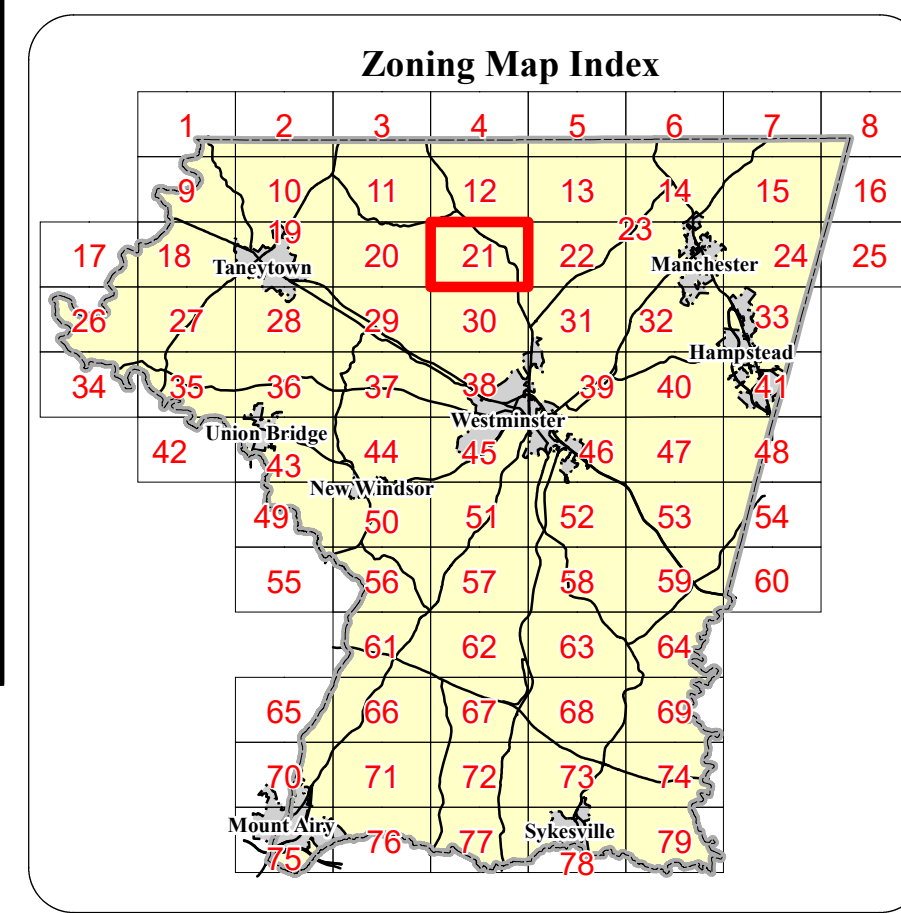
- Historic District Overlay

General

- County Border
- Corporate Limits
- Election District Boundary
- Parcel Boundary
- Railroad

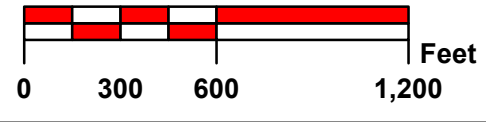


Joins Map 22



9.				18.			
8.				17.			
7.				16.			
6.				15.			
5.				14.			
4.				13.			
3.				12.			
2.				11.			
1.	MA 52	6/29/1972	Comprehensive Rezoning	10.			
Rev. #	MA #	Date	Water & Sewer Master Plan	Rev. #	MA #	Date	Description
			Description				

The information contained on this map is not to be construed or used as a "legal description" and is not a survey product. While Carroll County strives to provide the best data possible, it does not provide any guaranty of accuracy or completeness regarding the map information. Where uncertainty exists in regards to the zoning districts, a determination by the Zoning Administrator may be required. Any errors or omissions should be reported to the Carroll County Department of Land and Resource Management GIS section. Mapping contact: LRM@carrollcountymd.gov or 410-386-2949. Zoning contact: zoningadministrator@carrollcountymd.gov or 410-386-2980.



By Resolution of the County Commissioners of Carroll County, Maryland, a body corporate and politic of the State of Maryland

Map signed this _____ Day of _____, 20____

Attest: Shawn D. Reese County Clerk

Stephen A. Wantz President C. Eric Bouchat Commissioner

Edward C. Rothstein Vice-President Dennis E. Frazier Commissioner

C. Richard Weaver 2nd Vice President

COUNTY COMMISSIONERS OF CARROLL COUNTY, MARYLAND

Zoning Map 21