

Zoning Map 36

Properties outlined in white are those that are the subject of this rezoning.

Zoning Districts

- R-7,500
- R-10,000
- R-20,000
- R-40,000
- Conservation
- Agricultural
- Mobile Home Park
- Heritage

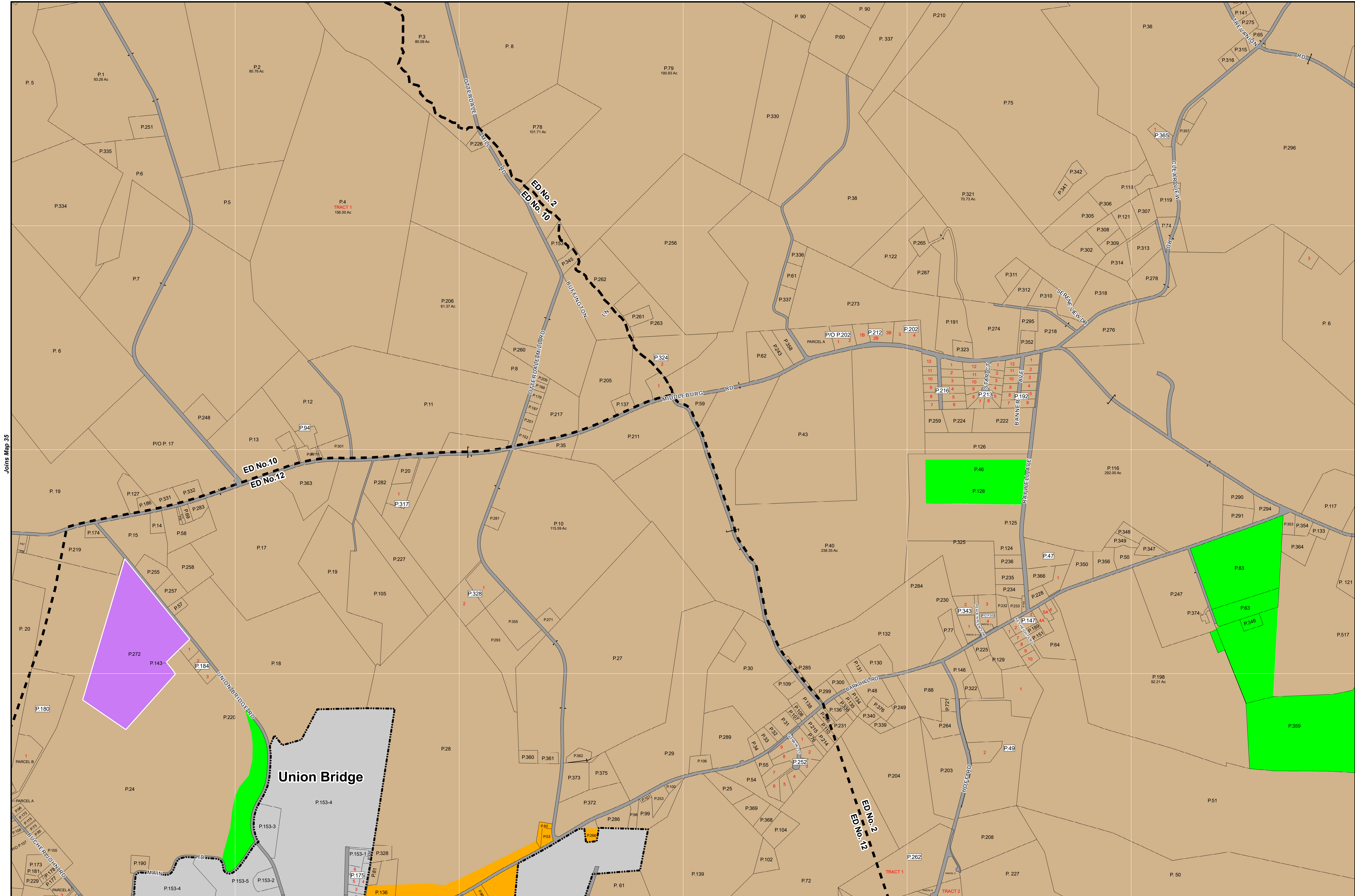
DRAFT
9/12/2019

Comprehensive Rezoning

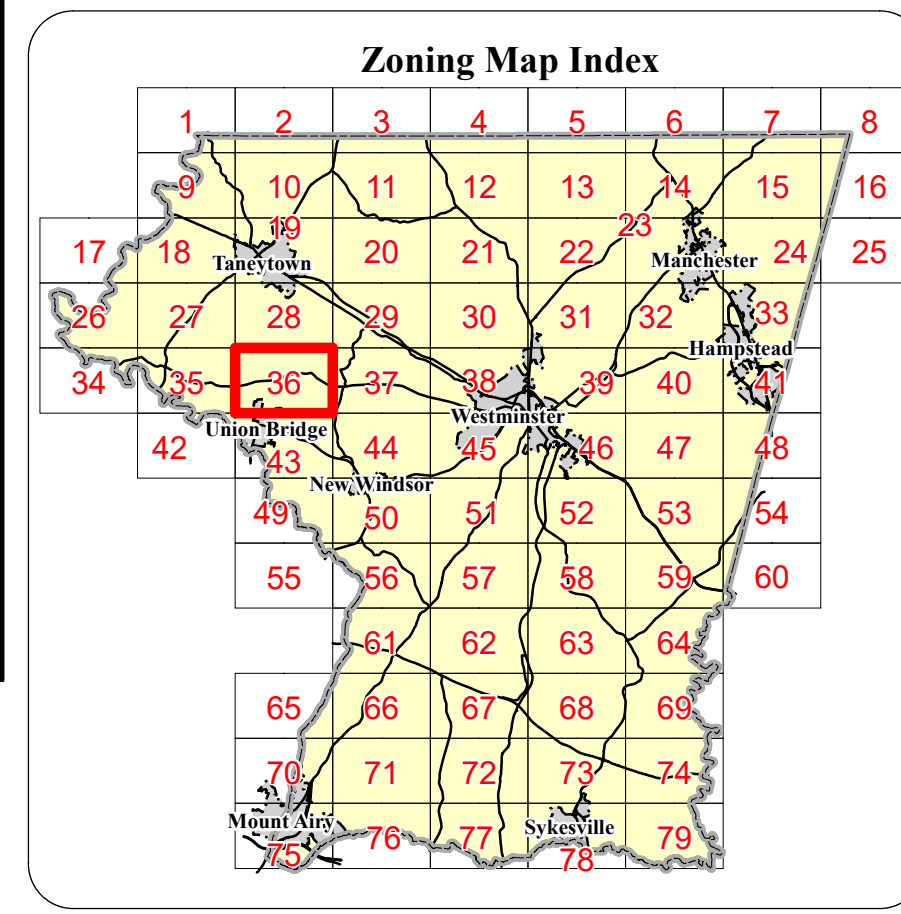
- C-1
- C-2
- C-3
- I-1
- I-2

Overlays

- Mineral Resource Overlay**
 - MR (Recovery Area)
 - VRA (Viable Resource Area)
 - MRN (Notification Area)
- Historic District Overlay**
 - Historic District Overlay
- General**
 - County Border
 - Corporate Limits
 - Election District Boundary
 - Parcel Boundary
 - Railroad



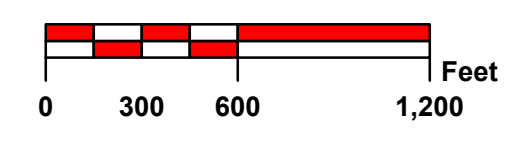
Joins Map 27



Zoning Map 36

Rev. #	MA #	Date	Description
9.			
8.			Comprehensive Rezoning
7.	MA 263	4/1/2004	Annexation #37-01
6.	MA 229	12/13/1995	Annexation #2-91
5.	MA 228	12/13/1995	Annexation #3-90
4.	MA 224	5/18/1995	Rezoning Case #192
3.	MA 194	11/29/1990	Union Bridge Comprehensive Plan
2.	MA 114	5/13/1982	Rrezoning Case #125
1.	MA 75	4/14/1977	Rrezoning Case #87

The information contained on this map is not to be construed or used as a "legal description" and is not a survey product. While Carroll County strives to provide the best data possible, it does not provide any guaranty of accuracy or completeness regarding the map information. Where uncertainty exists in regards to the zoning districts, a determination by the Zoning Administrator may be required. Any errors or omissions should be reported to the Carroll County Department of Land and Resource Management GIS section. Mapping contact: LRM@carrollcountymd.gov or 410-386-2949 Zoning contact: zoningadministration@carrollcountymd.gov or 410-386-2980



By Resolution of the County Commissioners of Carroll County, Maryland, a body corporate and politic of the State of Maryland

Map signed this _____ Day of _____, 20____

Attest: Shawn D. Reese County Clerk

Stephen A. Wantz	President	C. Eric Bouchat	Commissioner
Edward C. Rothstein	Vice-President	Dennis E. Frazier	Commissioner
C. Richard Weaver	2nd Vice President		

COUNTY COMMISSIONERS OF CARROLL COUNTY, MARYLAND