

Zoning Map 63

Properties outlined in white are those that are the subject of this rezoning.

Zoning Districts

- R-7,500
- R-10,000
- R-20,000
- R-40,000
- Conservation
- Agricultural
- Mobile Home Park
- Heritage

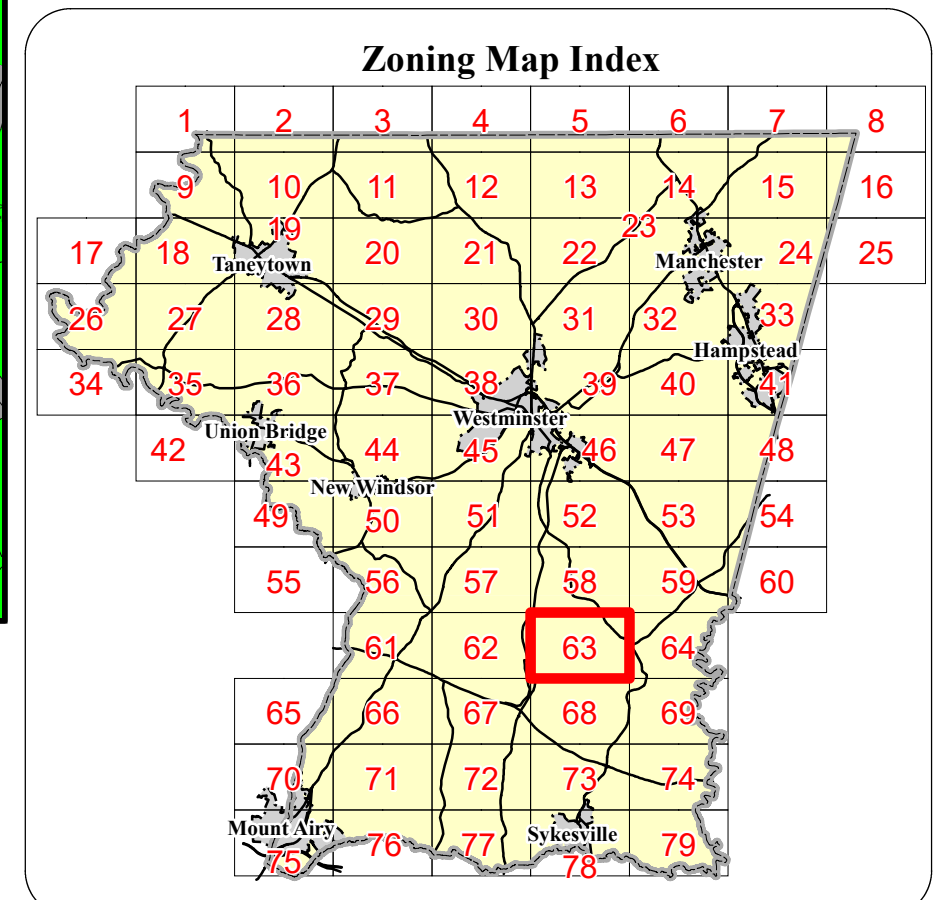
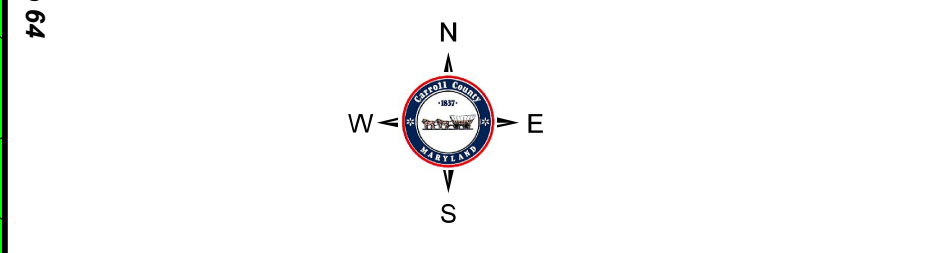
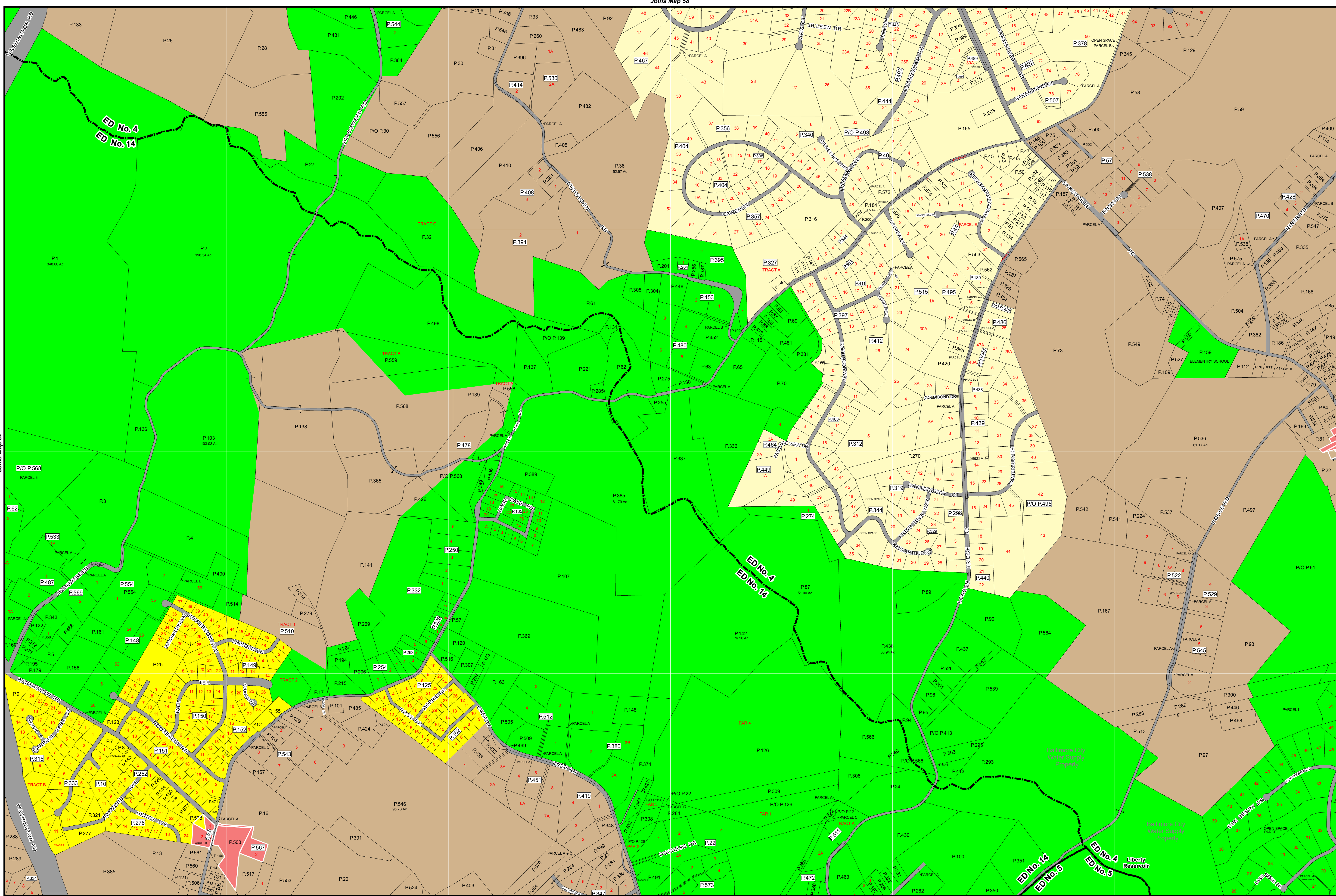
DRAFT
9/12/2019

Comprehensive Rezoning

- C-1
- C-2
- C-3
- I-1
- I-2

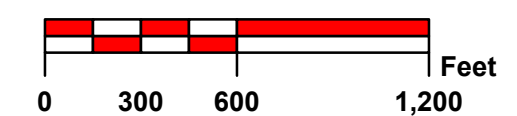
Overlays

- ### Mineral Resource Overlay
- MR (Recovery Area)
 - VRA (Viable Resource Area)
 - MRN (Notification Area)
- ### Historic District Overlay
- Historic District Overlay
- ### General
- County Border
 - Corporate Limits
 - Parcel Boundary
 - Railroad



Rev. #	MA #	Date	Description	Rev. #	MA #	Date	Description
9.				18.			
8.				17.			
7.				16.			
6.				15.			
5.				14.			
4.			Comprehensive Rezoning	13.			
3.			Administrative Map Correction (Parcels 215 & 216)	12.			
2.	MA 191	8/18/1990	Rezoning Case #169	11.			
1.	MA 102	1/6/1981	Comprehensive Rezoning Finksburg Area	10.			

The information contained on this map is not to be construed or used as a "legal description" and is not a survey product. While Carroll County strives to provide the best data possible, it does not provide any guaranty of accuracy or completeness regarding the map information. Where uncertainty exists in regards to the zoning districts, a determination by the Zoning Administrator may be required. Any errors or omissions should be reported to the Carroll County Department of Land and Resource Management GIS section. Mapping contact: LRM@carrollcountymd.gov or 410-386-2949. Zoning contact: zoningadministration@carrollcountymd.gov or 410-386-2980



By Resolution of the County Commissioners of Carroll County, Maryland, a body corporate and politic of the State of Maryland

Map signed this _____ Day of _____, 20____

Attest: Shawn D. Reese County Clerk

Stephen A. Wantz	President	C. Eric Bouchat	Commissioner
Edward C. Rothstein	Vice-President	Dennis E. Frazier	Commissioner
C. Richard Weaver	2nd Vice President		

COUNTY COMMISSIONERS OF CARROLL COUNTY, MARYLAND

Zoning Map 63