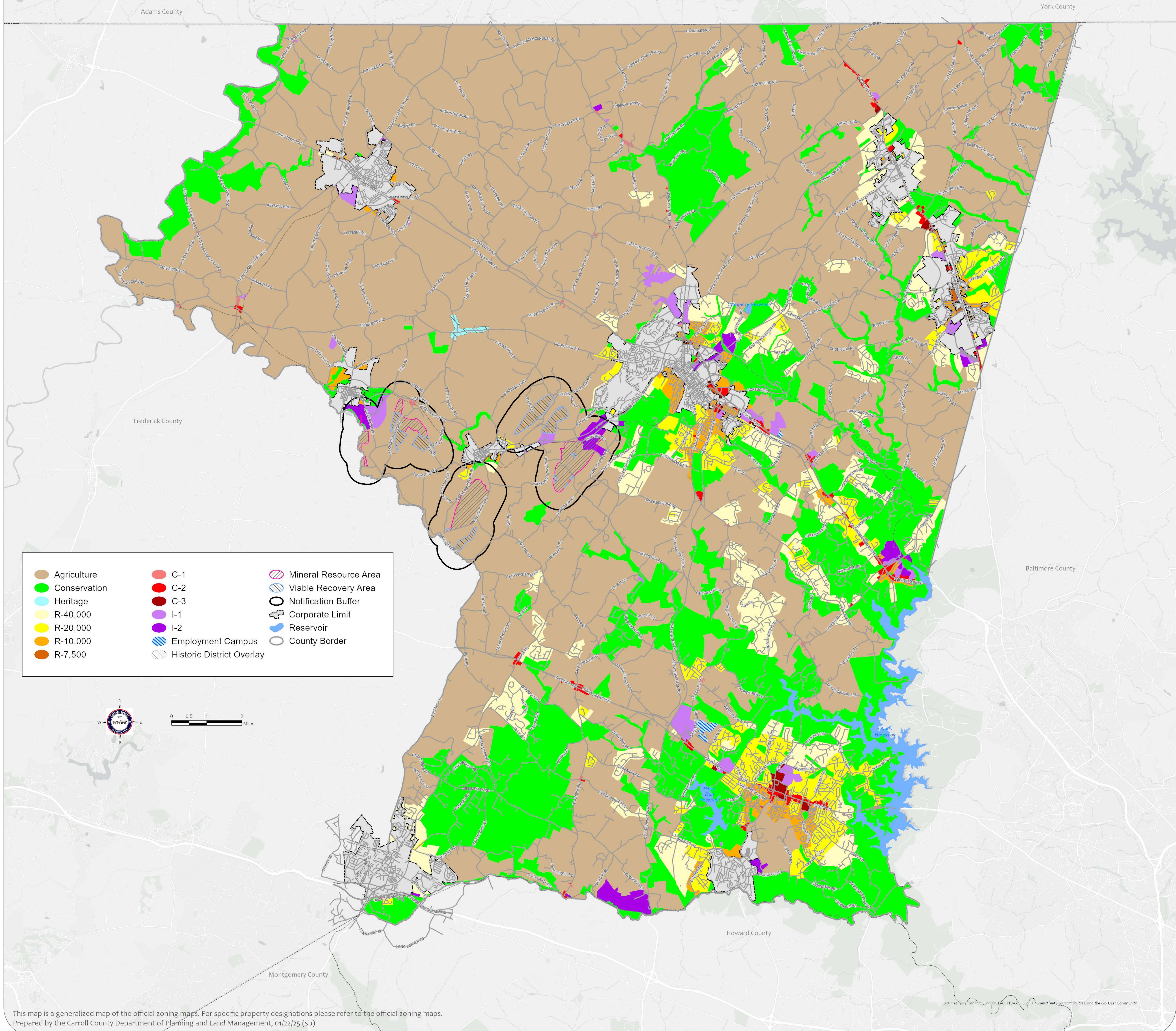
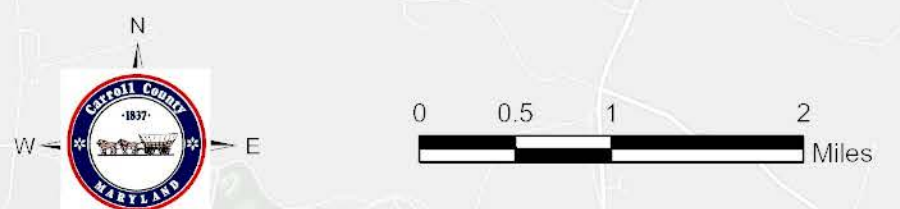


County-wide Zoning Map Carroll County, Maryland



- | | | |
|--|--|---|
| ■ Agriculture | ■ C-1 | Mineral Resource Area |
| ■ Conservation | ■ C-2 | Viable Recovery Area |
| ■ Heritage | ■ C-3 | Notification Buffer |
| ■ R-40,000 | ■ I-1 | Corporate Limit |
| ■ R-20,000 | ■ I-2 | ■ Reservoir |
| ■ R-10,000 | ■ Employment Campus | County Border |
| ■ R-7,500 | Historic District Overlay | |



This map is a generalized map of the official zoning maps. For specific property designations please refer to the official zoning maps.
Prepared by the Carroll County Department of Planning and Land Management, 01/22/25 (sb)

Source: Survey of the County, F&G, NOAA, USGS, and the GIS User Community