



# Carroll County Agricultural Land Preservation

Within Department of  
Planning & Land Management

As of March 31, 2024

## Accomplishments

- #1 in Maryland for number of acres preserved
- #2 in US for acres preserved through easement purchase (as of 2020)
- Top 5 in US for similar programs administered by local governments
- 2021 Maryland Sustainable Growth Award for Preservation and Conservation



## Responsibility Highlights

- Code Chapter 159
- Administration of four voluntary, permanent land preservation programs
- Support and facilitate Agricultural Land Preservation Advisory Board

## Ag Pres Programs Available in Carroll County

- Maryland Agricultural Land Preservation Foundation (MALPF) Program
- Carroll County Easement Purchase Program
- Rural Legacy Program
- Critical Farms Program (MALPF)

**50%** of Carroll County's land mass is in agricultural use



Carroll County ranks **1st** in Maryland for number of acres preserved



Agriculture is Carroll's **#1** industry



Carroll County aims to preserve **100,000** acres of farmland minimum  
Carroll expects to reach **80,000+** acres permanently preserved in 2024



Every **\$1** invested in Ag Pres stimulates \$1.80 - \$2.00 in economic benefit to community



Carroll County ranks **3rd** in Maryland for production of sheep, goats, wool, mohair, and milk



Carroll County ranks **1st** in Maryland for number of cut Christmas tree farms with **20** farms



Carroll County ranks **#3** in the state for sales of milk from cows



Carroll County ranks **2nd** in the U.S. for number of acres preserved through easement purchase  
More than **723** farms are preserved in Carroll County



Ag products sold in Carroll County valued at **\$110 million** annually



## Ag Pres Story

- Interactive story and maps
- Facts, history, accomplishments, photos, etc.



<https://arcg.is/1fGWW8>

## Cont@ct Us

Program Manager—JP Smith, Jr.

↳ Preservation Specialist—Jackie Brathuhn

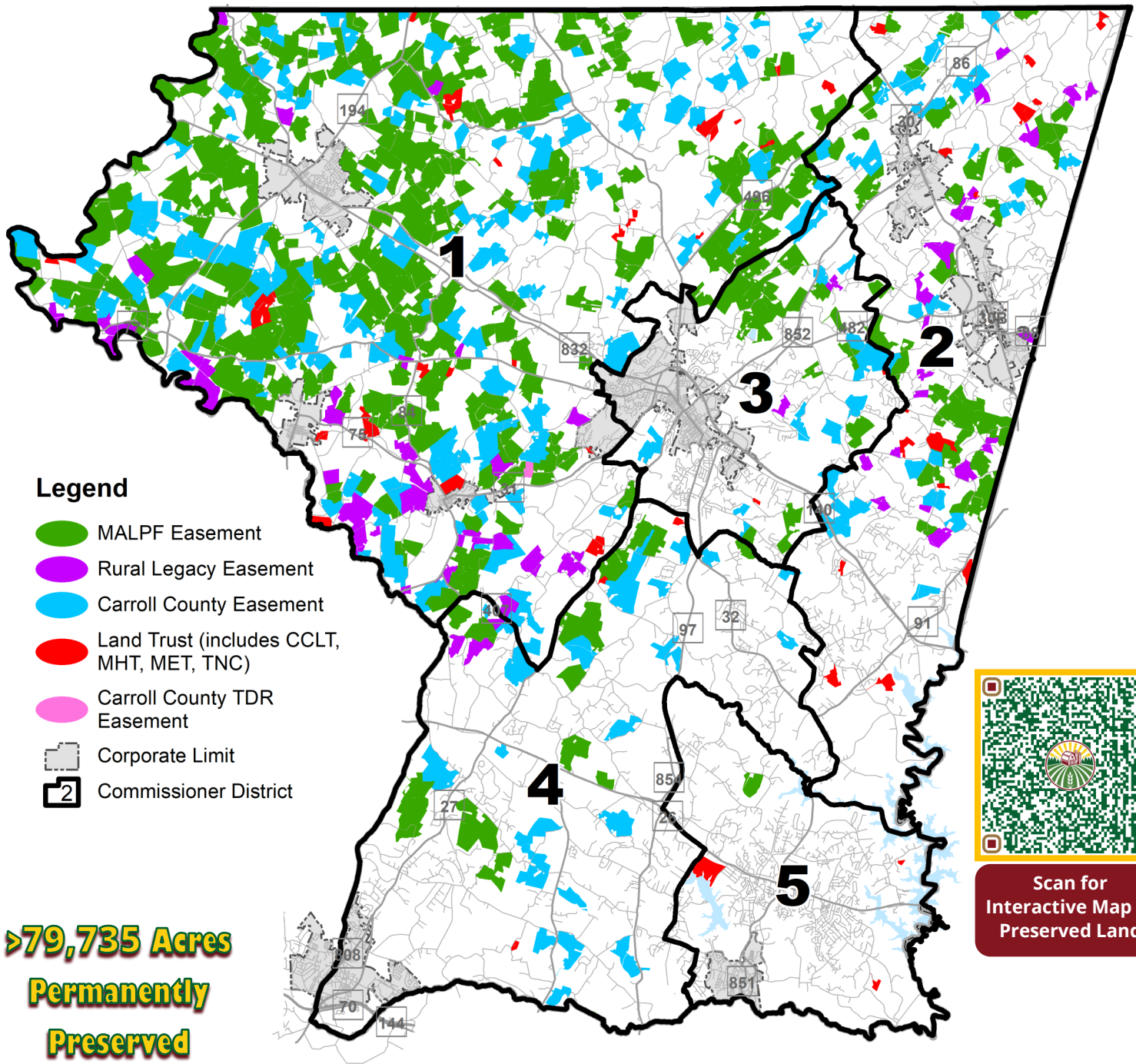
↳ Office Technician—Donna Black

Phone: 410-386-2214

Email: [CarrollAgPres@CarrollCountyMD.gov](mailto:CarrollAgPres@CarrollCountyMD.gov)

Website: [carrollcountymd.gov/AgPres](http://carrollcountymd.gov/AgPres)





**>79,735 Acres  
Permanently  
Preserved**



Scan for  
Interactive Map of  
Preserved Land

**Agricultural Land Preserved** (as of 3/10/2024)



Program	Acres	# of Farms
MALPF (includes Critical Farms)	46,607	408
Carroll County	25,141	229
Rural Legacy	5,425	68
Land Trusts & Conservancies	2,562	49
<b>TOTALS</b>	<b>79,735</b>	<b>754</b>



**Carroll Ag Pres**

Note: Data as of March 10, 2024. Colors correspond to map, Land Trust acreage includes 1 TDR easement of 52 acres.