

Zoning Map 46



Zoning Districts

Residential District

- R-40,000
- R-20,000
- R-10,000
- R-7,500

Commercial District

- C-1
- C-2
- C-3
- I-1
- I-2

- Employment Campus

Resource District

- Heritage
- Agriculture
- Conservation

Overlays

Mineral Resource Overlay

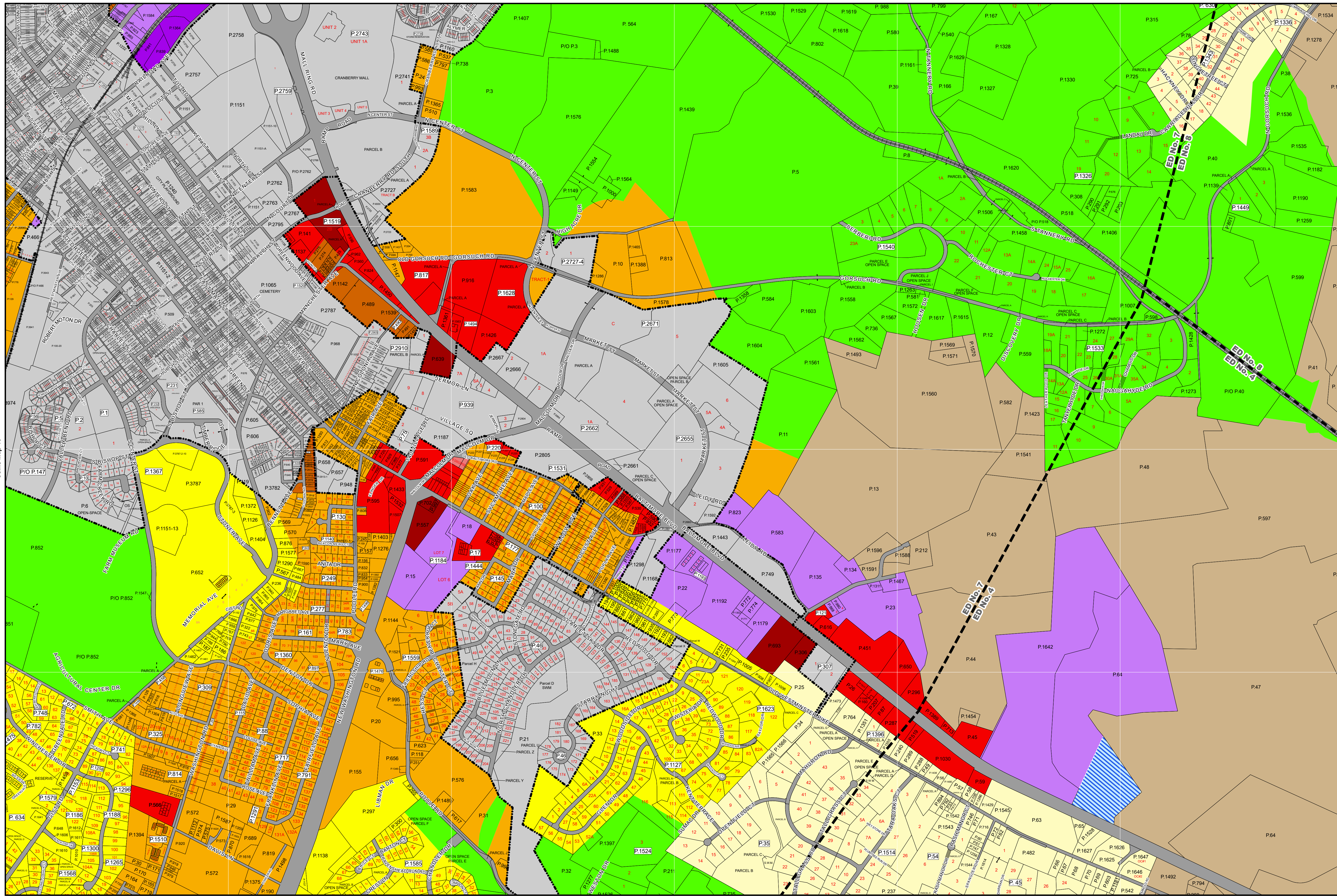
- MR (Recovery Area)
- VRA (Viable Resource Area)
- MRN (Notification Area)

Historic District Overlay

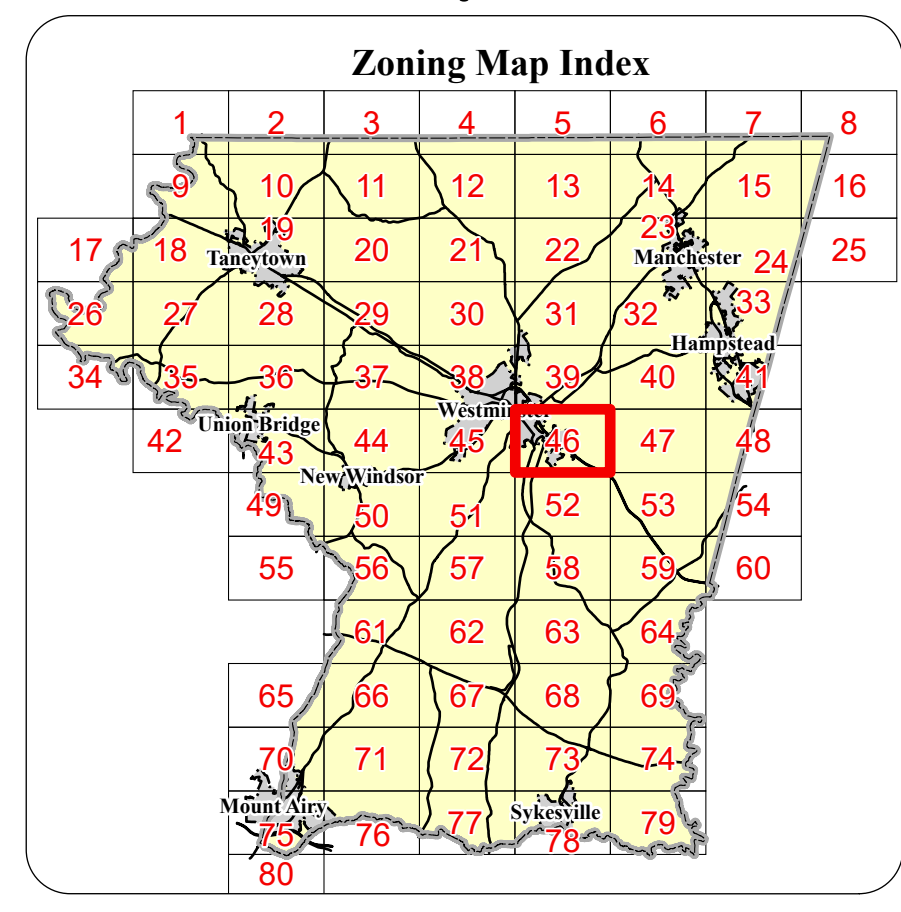
- Historic District Overlay

General

- County Border
- Corporate Limits
- Election District Boundary
- Rural Village
- Parcel Boundary
- Railroad



Joins Map 47



11 MA 34 8/24/1979 Rezoning Case #12	20 MA 154 6/17/1981 Rezoning Case #25	33 MA 274 5/20/2006 Rezoning Case #44	44 Res. 1185-2023 8/10/2023 Rezoning Case #71 (Eberwein, Candace)
10 MA 36 11/18/1971 Rezoning Case #13	21 MA 155 5/5/1981 Rezoning Case #23	32 MA 273 5/20/2006 Rezoning Case #43	43 Res. 1183-2023 10/27/2022 Rezoning Case #74
9 MA 43 1/14/1966 Rezoning Case #10	19 MA 148 10/17/1980 Rezoning Case #20	31 MA 272 5/20/2006 Rezoning Case #42	42 Res. 1184-2023 10/27/2022 Rezoning Case #73
8 MA 37 1/14/1966 Rezoning Case #9	18 MA 145 9/26/1980 Rezoning Case #19	30 MA 269 1/10/2002 Rezoning Case #41	41 Res. 1182-2023 1/14/2023 Rezoning Case #72
7 MA 32 5/27/1969 Rezoning Case #8	17 MA 139 3/17/1980 Rezoning Case #18	29 8/7/2003 Court of Special Appeals, Case No. 1389	40 Ord. 1948 1/17/2019 Comprehensive Rezoning
6 MA 31 4/27/1968 Rezoning Case #7	16 MA 135 9/27/1984 Rezoning Case #17	28 11/27/2002 Ordinance No. 10-17	39 Res. 988-2011 3/16/2017 Rezoning Case #69
5 MA 29 3/27/1966 Rezoning Case #6	15 MA 129 8/26/1984 Rezoning Case #16	27 MA 248 3/10/2001 Rezoning Case #40	38 Res. 997-2011 3/16/2017 Rezoning Case #68
4 MA 24 1/22/1966 Rezoning Case #5	14 MA 118 8/4/1983 Rezoning Case #15	26 1/20/2002 Ordinance No. 10-16	37 5/2/2014 Ordinance No. 2014-02
3 MA 14 10/9/1965 Rezoning Case #4	13 MA 115 12/16/1982 Rezoning Case #14	25 MA 225 8/4/1983 Rezoning Case #39	36 MA 191 10/18/1980 Rezoning Case #38
2 MA 12 8/22/1965 Rezoning Case #3	12 MA 110 3/31/1981 Rezoning Case #13	24 MA 191 10/18/1980 Rezoning Case #38	35 5/7/2013 Ordinance No. 2013-04
1 MA 3 9/23/1966 Rezoning Case #2	11 MA 108 3/31/1981 Rezoning Case #12	23 MA 179 3/31/1981 Rezoning Case #37	34 MA 157 3/31/1981 Rezoning Case #36

The information contained on this map is not to be construed or used as a "legal description" and is not a survey product. While Carroll County strives to provide the best data possible, it does not provide any guarantee of accuracy or completeness regarding the map information. Where uncertainty exists in regards to the zoning districts, a determination by the Zoning Administrator may be required.

Any errors or omissions should be reported to the Carroll County Department of Land and Resource Management GIS section. Mapping contact: LRM@carrollcountymd.gov or 410-386-2949. Zoning contact: zoningadministration@carrollcountymd.gov or 410-386-2980.

By Resolution of the County Commissioners of Carroll County, Maryland, a body corporate and politic of the State of Maryland

Map signed this _____ Day of _____, 20__

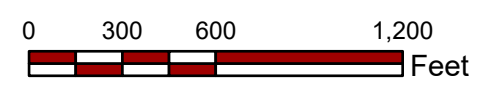
Attest:
Vivian Daly County Clerk

Edward C. Rothstein (COL, Ret.) President
Michael R. Guerin Commissioner

Kenneth A. Kiler Vice-President
Joseph A. Vigiotti Commissioner

Thomas S. Gordon III Commissioner

COUNTY COMMISSIONERS OF CARROLL COUNTY, MARYLAND



Zoning Map 46